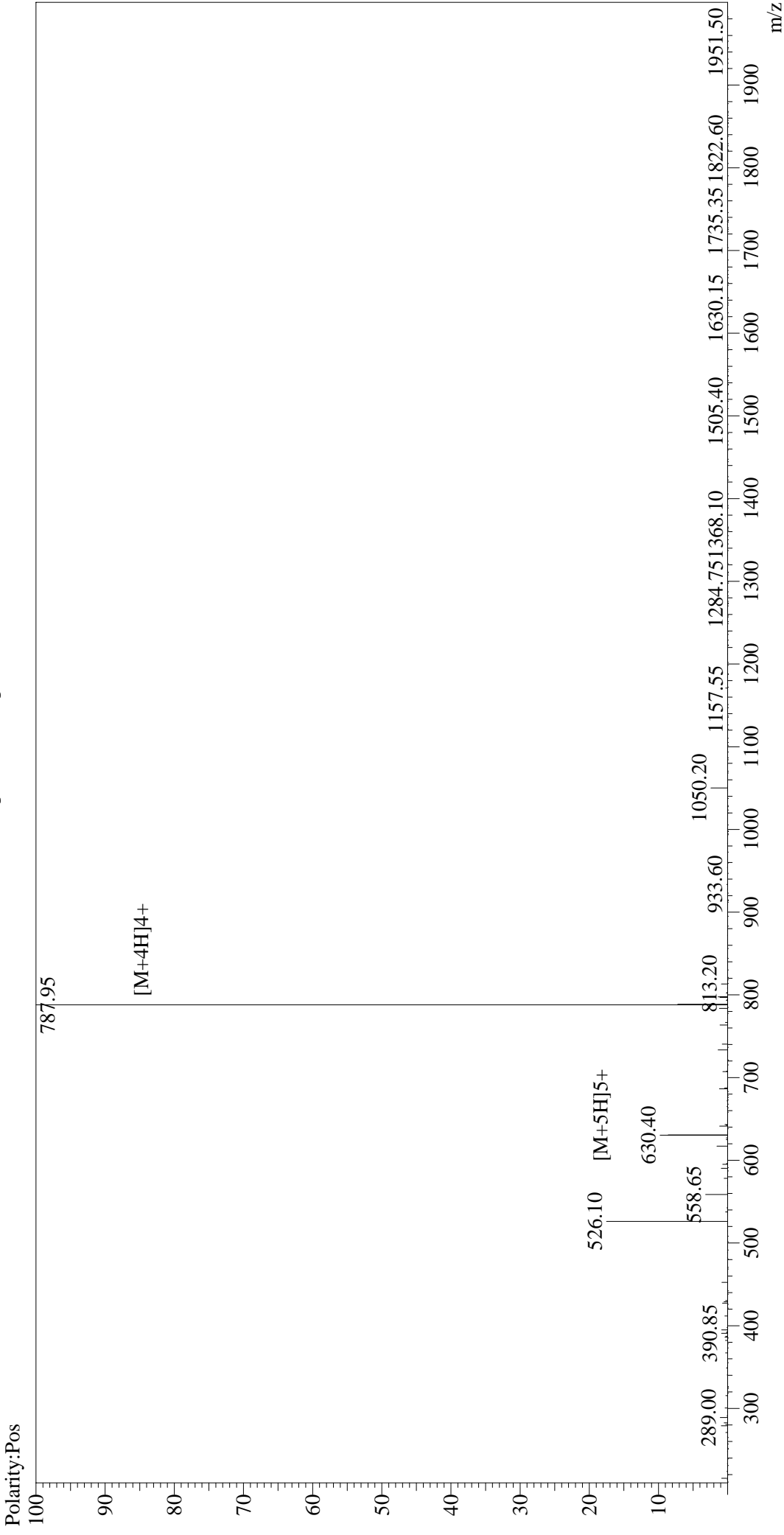


MS Spectrum Graph



Interface :ESI
Nebulizing Gas Flow :1.5L/min
CDL Temp :250°C
Block Temp :200°C

Interface Bias : +4.5 kV
Drying Gas Flow :5 L/min
T.Flow :0.2 ml/min
B.conc :50%H2O/50%MeOH

Sample Information

Acquired by : Admin
Date Acquired : 2016-12-13 21:42:35
Injection Volume : 1
Sample Name : PACAP (1-27), human, ovine, rat
Cat No. : RP10334
Lot No. : PE5051611
Theoretical MW : 3147.62
Observed MW : 3147.80