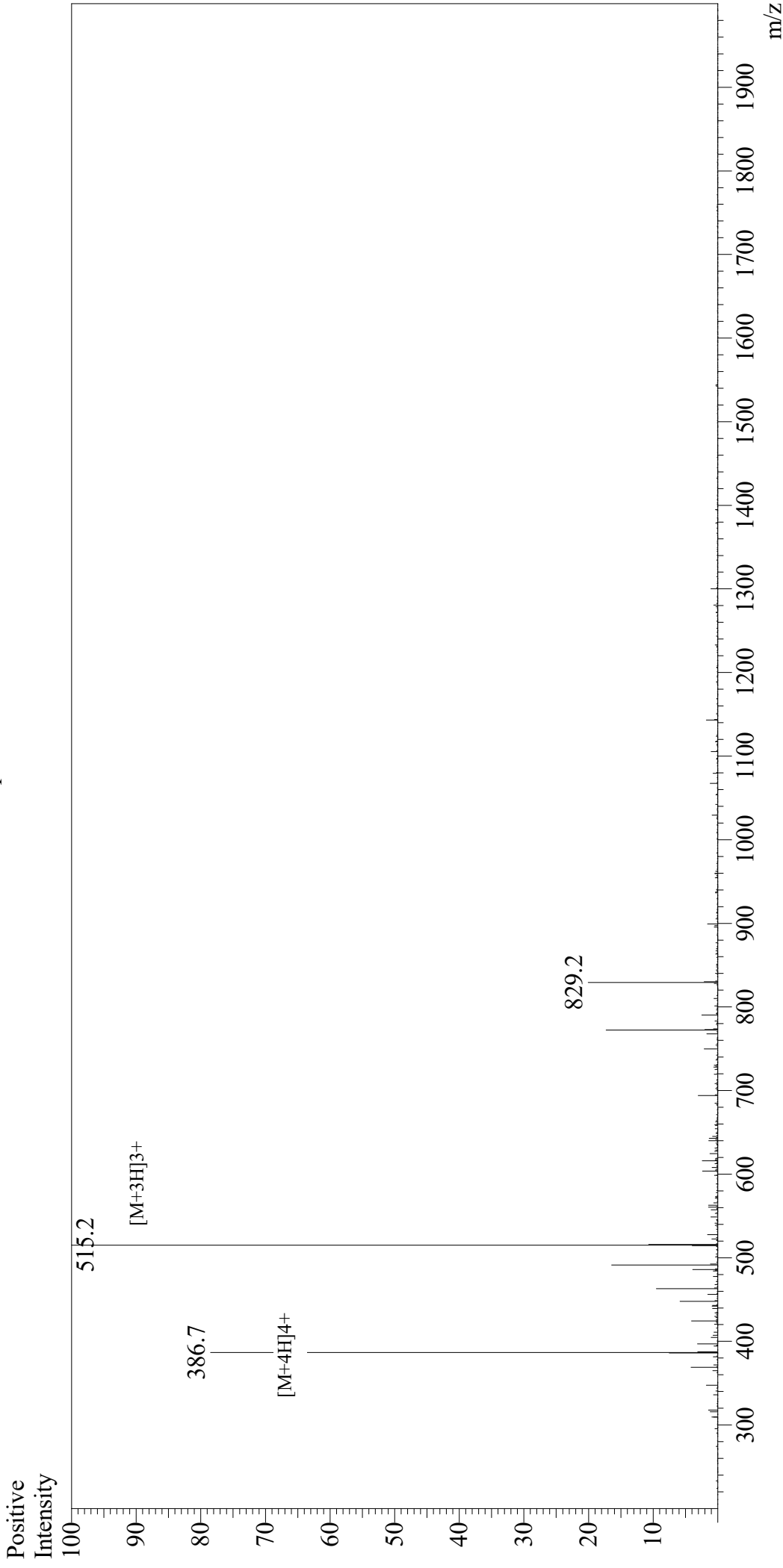


# Mass Spectrum



Sample Information

User : Gary

Month-Day Processed : 03/01/19

Time Processed : 10:07:02 AM

Injection Volume : 0.2

Sample Name : AMARA peptide

Cat No. : RP20472

Lot No. : PE8991902

Theoretical MW : 1542.80

Observed MW : 1542.6

Equipment : GK11010007

Interface Bias : +4.5kV

Drying Gas Flow : 5 L/min

T.Flow : 0.2ml/min

B.conc : 50%H2O/50%MeOH

Interface : ESI

Nebulizing Gas Flow : 1.5L/min

CDL Temp : 250

Block Temp : 200