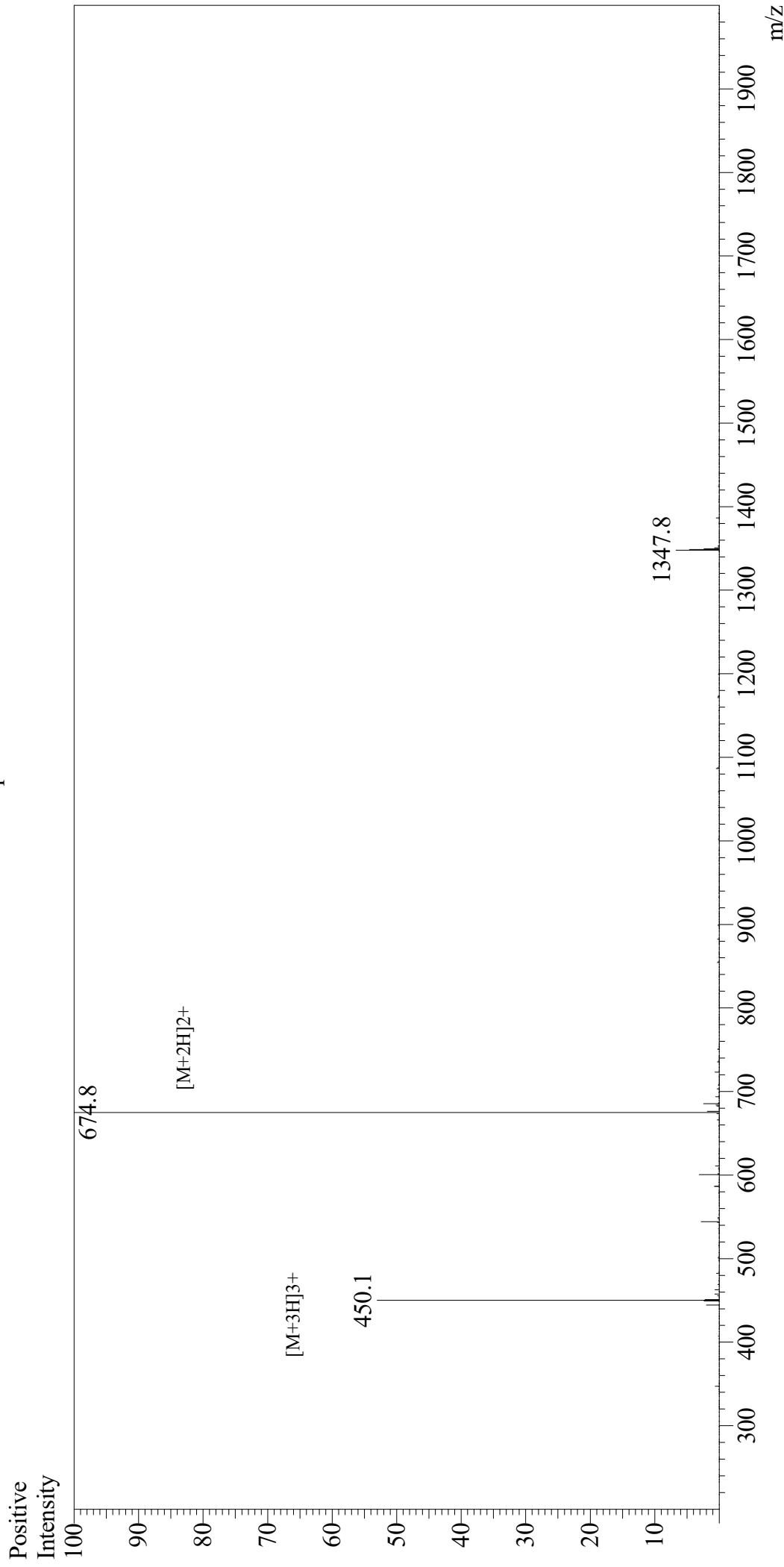


Mass Spectrum



Sample Information

User : Gary
Month-Day Processed : 03/27/20
Time Processed : 10:33:23 AM
Injection Volume : 0.3
Sample Name : Substance P
Cat No. : RP10178
Lot No. : E6401420C
Theoretical MW : 1347.63
Observed MW : 1347.6

Interface

Interface : ESI
Nebulizing Gas Flow : 1.5L/min
CDL Temp : 250
Block Temp : 200

Equipment

Equipment : GK11010007
Interface Bias : +4.5kV
Drying Gas Flow : 5 L/min
T.Flow : 0.2ml/min
B.conc : 50%H2O/50%MeOH