

CERTIFICATE OF ANALYSIS

Product Information

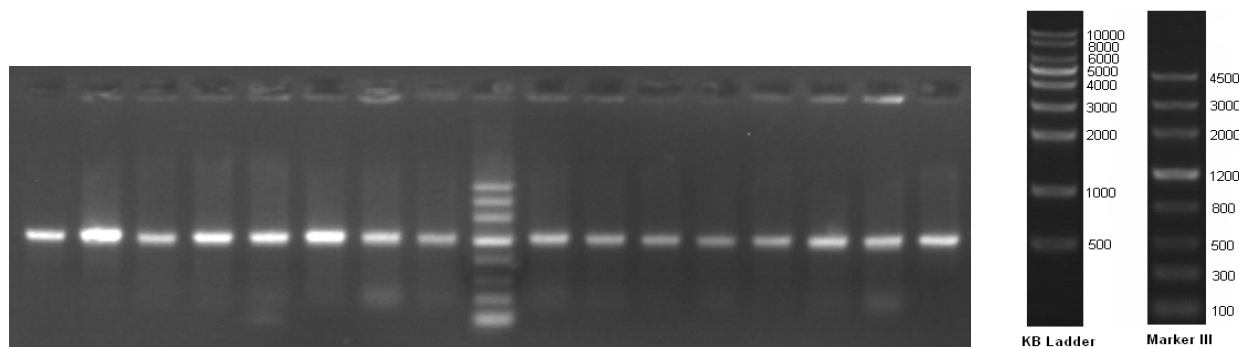
| | |
|--------------------|---------------------------|
| Product Name: | Clone EZ® PCR Cloning Kit |
| Cat. No.: | L00339 |
| Lot No.: | GX0011607 |
| Exp. Date: | 01 Jul 2017 |
| Storage Condition: | -20 °C |

Kit Contents

| Kit Components | Lot. No | Storage Condition |
|-------------------------|-----------|-------------------|
| CloneEZ Enzyme | GX0011607 | -20 °C |
| CloneEZ Buffer | GX0011607 | -20 °C |
| 1Kb PCR fragment | GX0011607 | -20 °C |
| Linearized pUC57 vector | GX0011607 | -20 °C |

QC Result

1kb control Insert was cloned into pUC57 using the kit. The inserts were detected by PCR when 16 bacterial colonies were picked. The results are displayed in the figure below. It was showed that successful recombinant rates is 100%.



Caution:

For laboratory or further manufacturing use only. Not intended for household use. If you have any questions about the Certificate of Analysis, please contact our customer service representative at 1-877-436-7274 (Toll-Free), or 1-732-885-9188.

Certified by: *Morgan*

Date: 07/06/2016

Genel Department