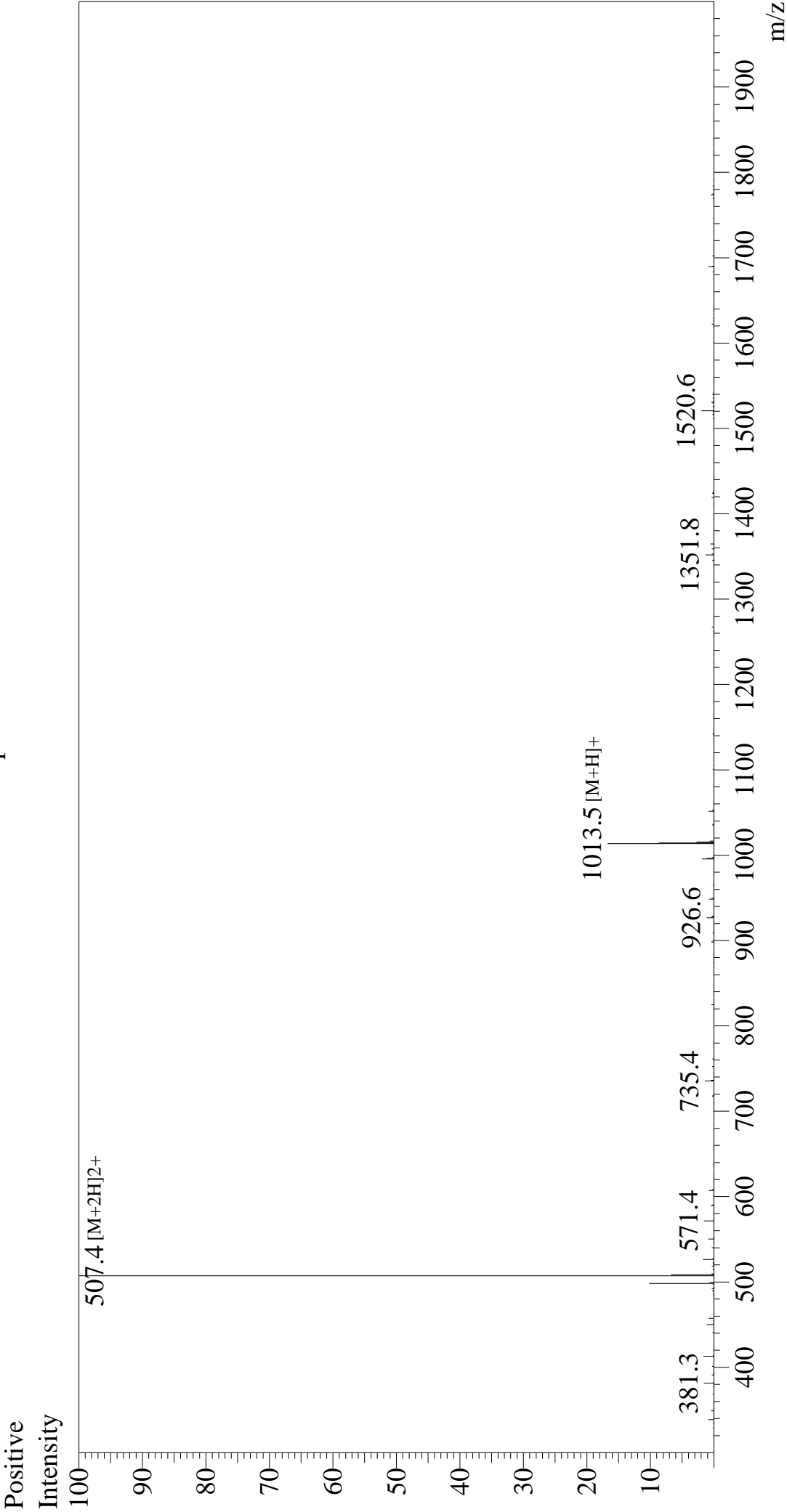


Mass Spectrum



Sample Information		Equipment	
Month-Day Processed :	08/27/24	Interface	:ZJ22010150
Time Processed :	19:26:34	Nebulizing Gas Flow	: +4.5 kV
Injection Volume :	0.2	CDL Temp	:5 L/min
Sample Name :	DYKDDDDDK Peptide	Drying Gas Flow	:0.2 ml/min
Cat No. :	RP10586	T.Flow	:50%H2O/50%M
Lot No. :	E9991024H	B.conc	
Theoretical MW :	1012.97		
Observed MW :	1012.8		