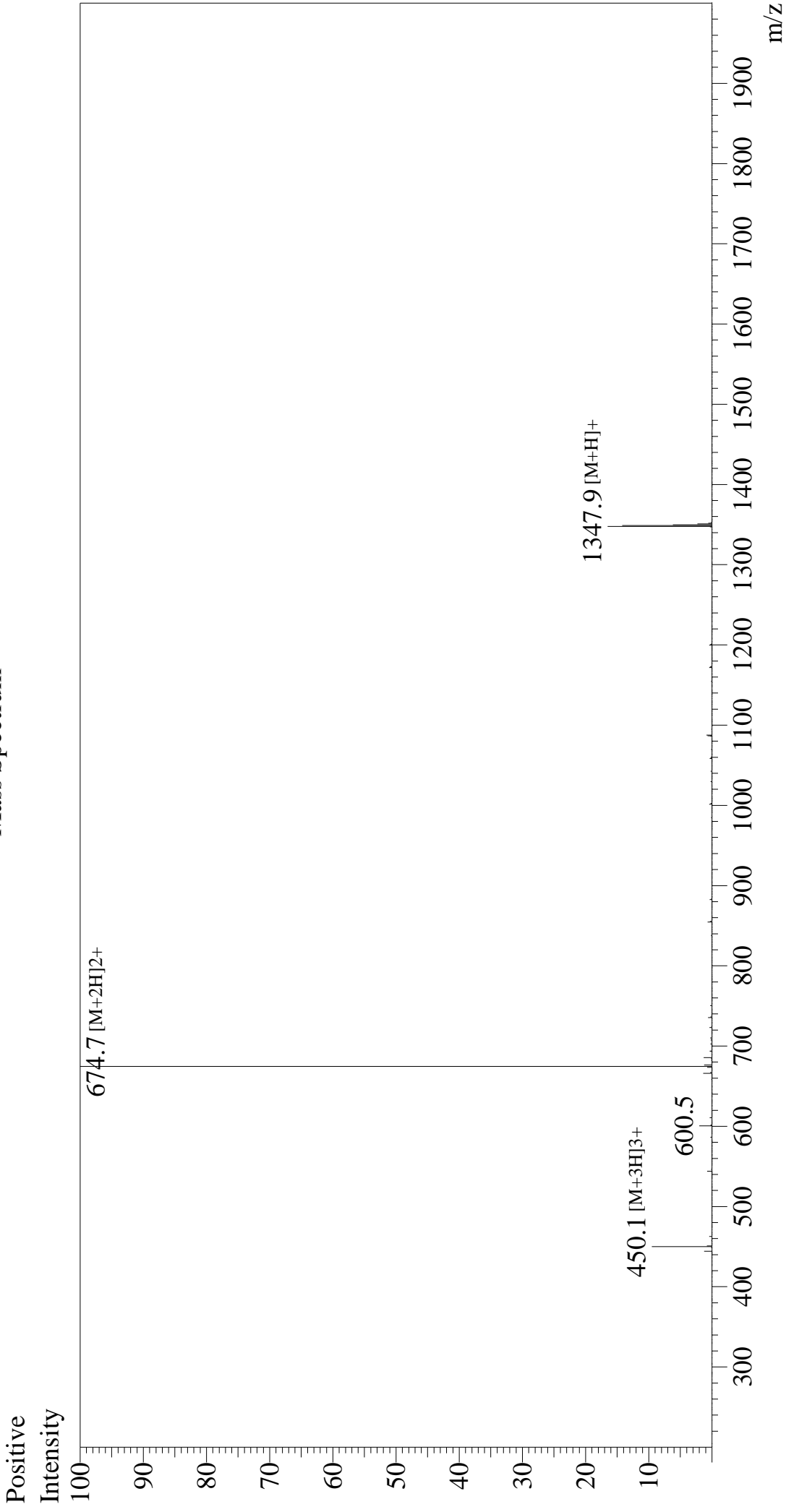


Mass Spectrum



Sample Information
Month-Day Processed : 01/08/26
Time Processed : 20:03:12
Injection Volume : 0.3
Sample Name : Substance P
Cat No. : RP10178
Lot No. : E8544726A
Theoretical MW : 1347.63
Observed MW : 1347.4

Interface : ESI
Nebulizing Gas Flow : 1.5L/min
CDL Temp : 250
Block Temp : 200
Equipment : ZI21010035
Interface Bias : +4.5 kV
Drying Gas Flow : 5 L/min
T.Flow : 0.2 ml/min
B.conc : 50%H2O/50%MeOH