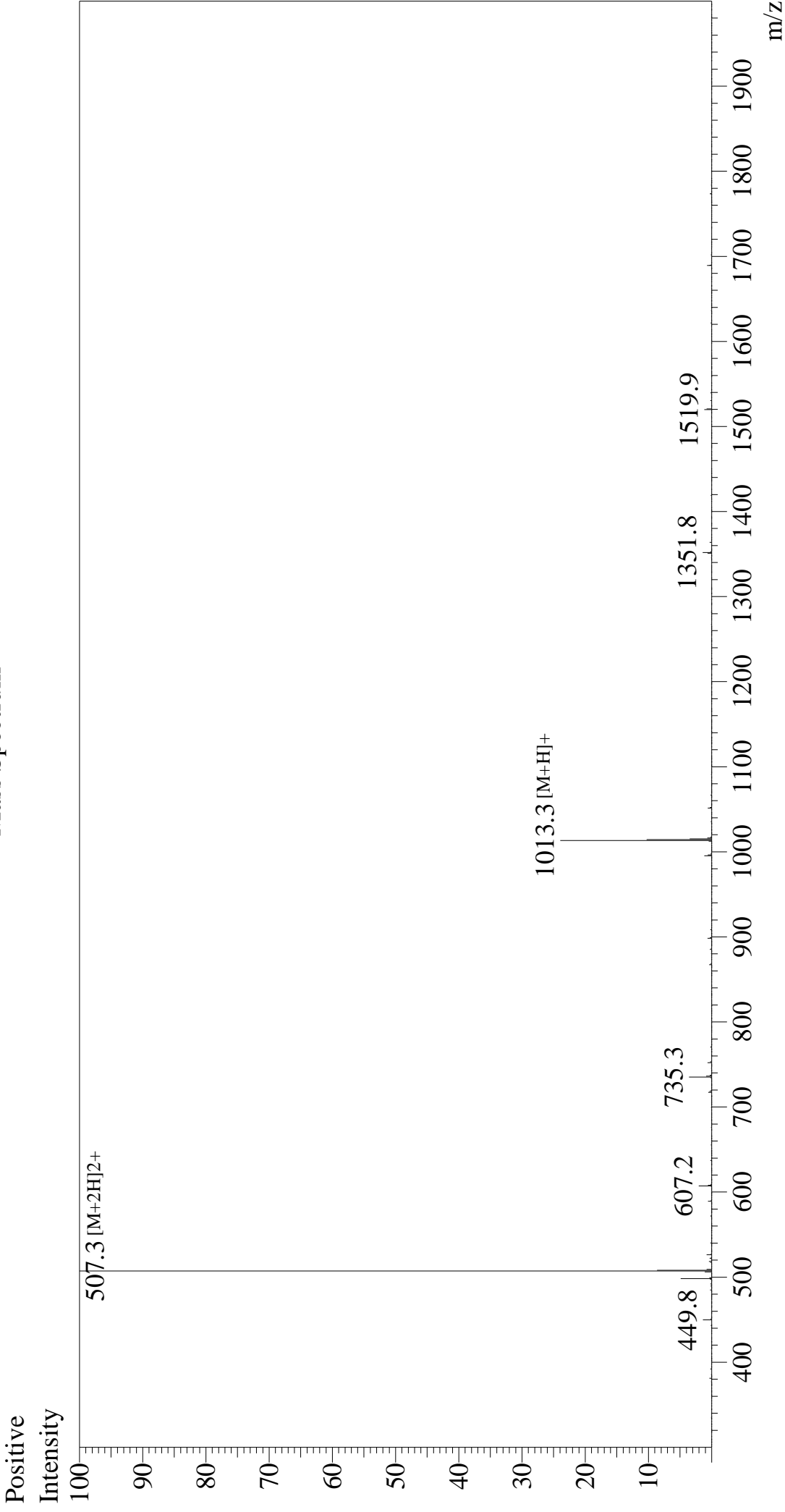


Mass Spectrum



Sample Information		Equipment	
Month-Day Processed :	10/07/24	Interface	: ZJ21010035
Time Processed :	14:41:41	Nebulizing Gas Flow	: +4.5 kV
Injection Volume :	0.4	CDL Temp	: 5 L/min
Sample Name :	DYKDDDDDK Peptide	Drying Gas Flow	: 0.2 ml/min
Cat No. :	RP10586	T.Flow	: 50% H2O/50% MeC
Lot No. :	E8534024J	B.conc	
Theoretical MW :	1012.97		
Observed MW :	1012.6		