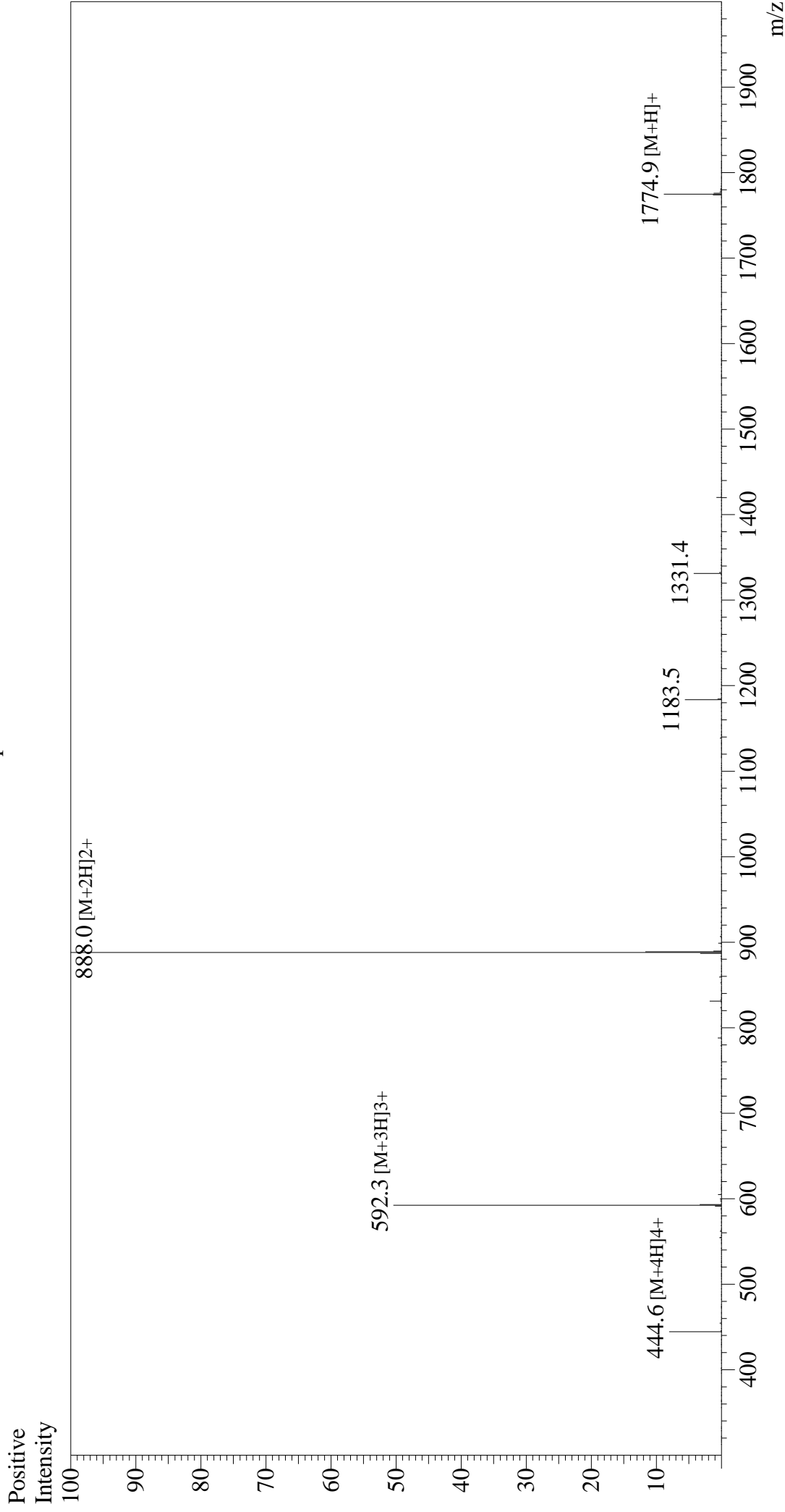


Mass Spectrum



Sample Information
Month-Day Processed : 05/16/26
Time Processed : 11:24:49
Injection Volume : 0.3
Sample Name : OVA Peptide (323-339)
Cat No. : RP10610
Lot No. : E8391226E

Interface : ESI
Nebulizing Gas Flow : 1.5L/min
CDL Temp : 250
Block Temp : 200
Equipment : ZJ22010150
Interface Bias : +4.5 kV
Drying Gas Flow : 5 L/min
T.Flow : 0.2 ml/min
B.conc : 50% H2O/50% MeOH

Theoretical MW: 1773.91

Observed MW: 1774.0