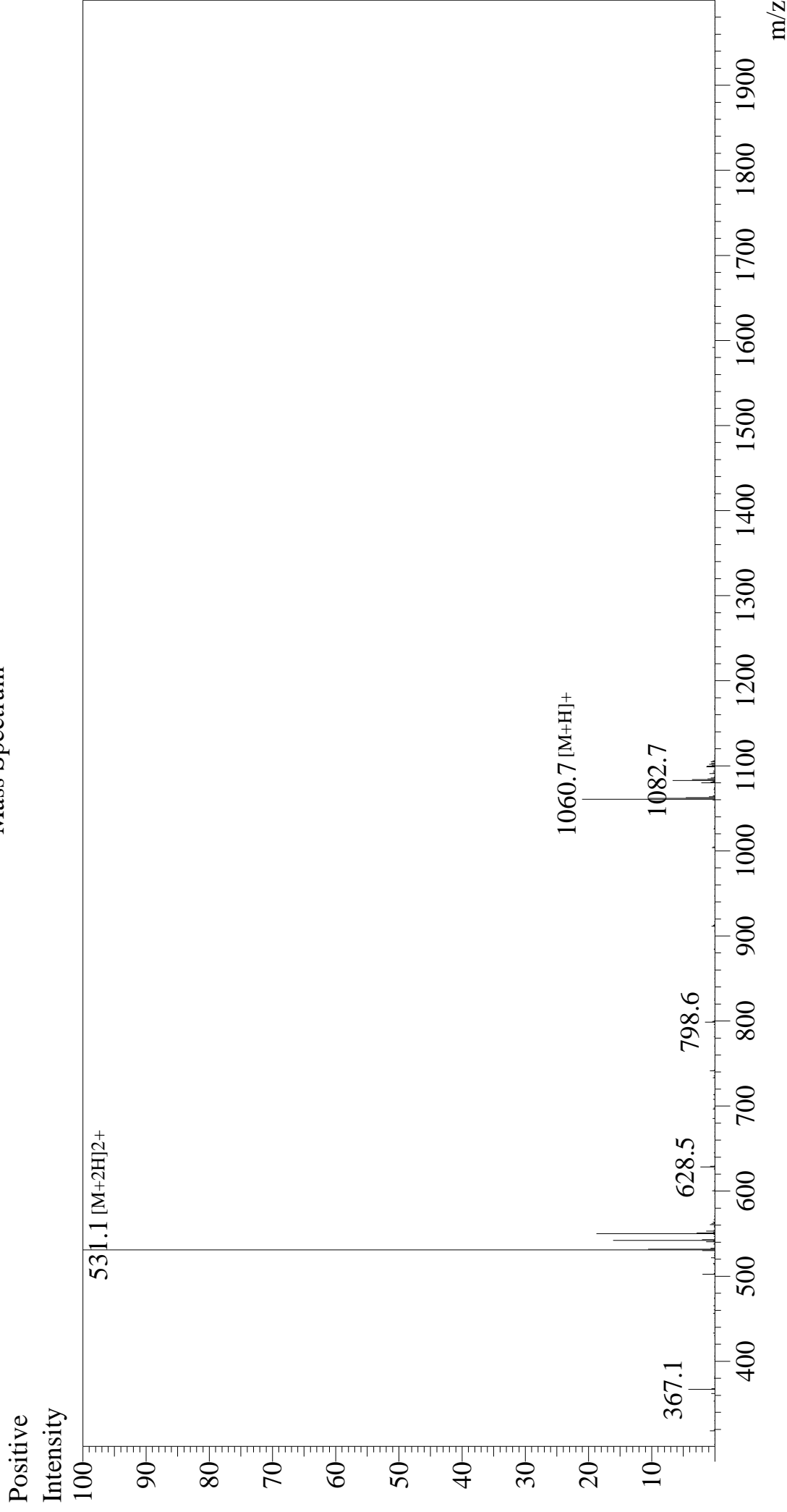


# Mass Spectrum



Sample Information		Interface	:ESI	Equipment	:ZJ22010150
Month-Day Processed :	06/12/23	Nebulizing Gas Flow	:1.5L/min	Interface Bias	: +4.5 kV
Time Processed :	19:45:36	CDL Temp	:250	Drying Gas Flow	:5 L/min
Injection Volume :	0.3	Block Temp	:200	T.Flow	:0.2 ml/min
Sample Name :	$\beta$ -Amyloid (25-35)			B.conc	:50% H <sub>2</sub> O/50% MeOH
Cat No. :	RP10008				
Lot No. :	E8155623F				
Theoretical MW :	1060.27				
Observed MW :	1060.2				