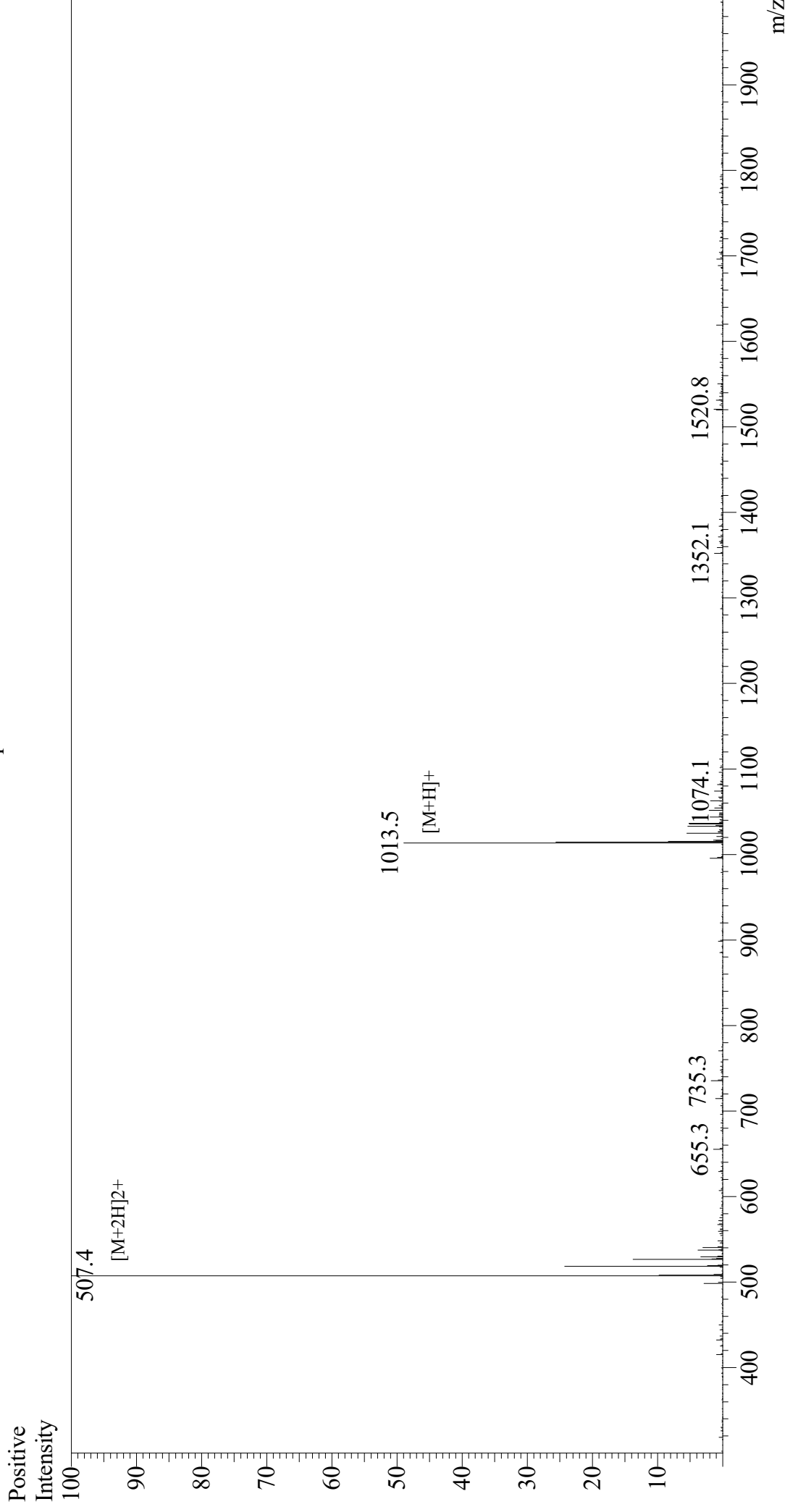


Mass Spectrum



Sample Information

Month-Day Processed : 02/23/23
 Time Processed : 9:29:45
 Injection Volume : 0.2
 Sample Name : DYKDDDDK Peptide
 Cat No. : RP10586
 Lot No. : E7865823B
 Theoretical MW : 1012.97
 Observed MW : 1012.8

Interface : ESI
 Nebulizing Gas Flow : 1.5L/min
 CDL Temp : 250
 Block Temp : 200

Equipment : ZJ21010035
 Interface Bias : +4.5 kV
 Drying Gas Flow : 5 L/min
 T.Flow : 0.2 ml/min
 B.conc : 50%H₂O/50%MeOH