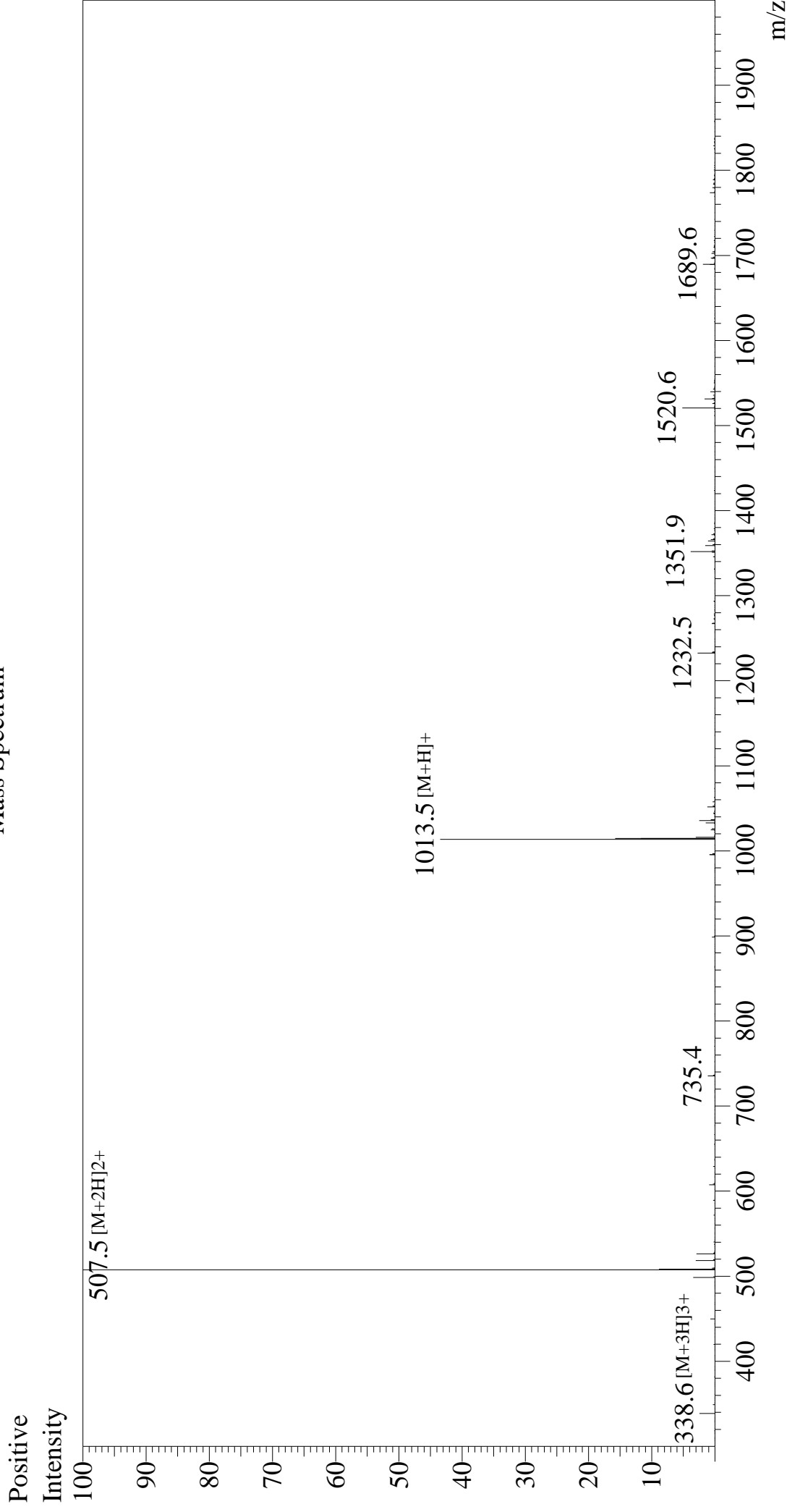


# Mass Spectrum



Sample Information		Equipment	
Month-Day Processed :	07/04/23	Interface	:ZJ22010150
Time Processed :	7:04:53 PM	Nebulizing Gas Flow	: +4.5 kV
Injection Volume :	0.1	CDL Temp	:5 L/min
Sample Name :	DYKDDDDDK Peptide	Block Temp	:0.2 ml/min
Cat No. :	RP10586	Drying Gas Flow	:50% H2O/50% MeOH
Lot No. :	E6020623G	T.Flow	
Theoretical MW : 1012.97		B.conc	
Observed MW : 1013.0			