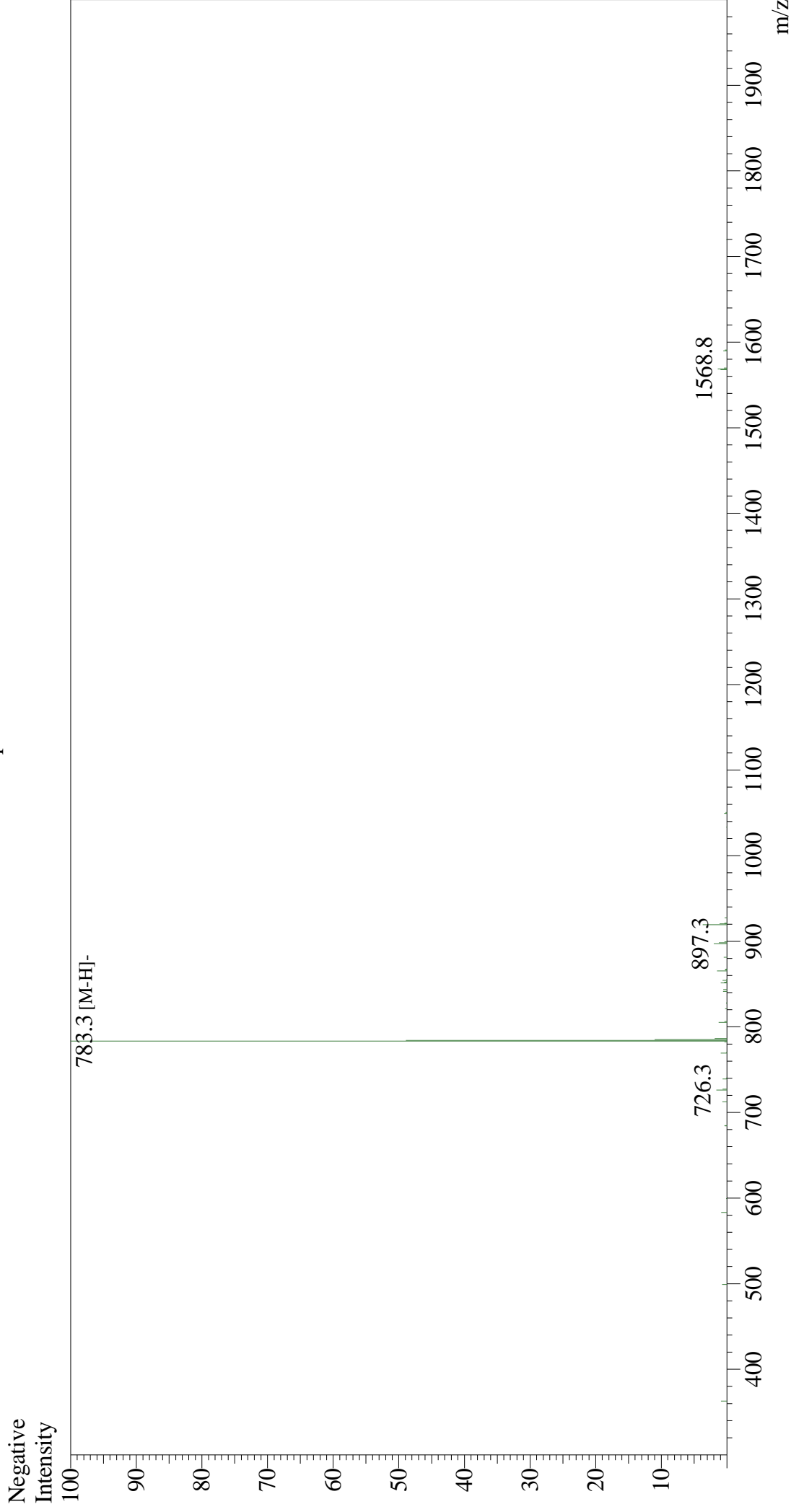


# Mass Spectrum



## Sample Information

Month-Day Processed : 11/07/23  
Time Processed : 7:34:26 PM  
Injection Volume : 0.1  
Sample Name : KRAS G12V Peptide (VVGAVGVGK)  
Cat No. : RP30228  
Lot No. : E5799023K  
Theoretical MW : 784.95  
Observed MW : 784.3

Interface : ESI  
Nebulizing Gas Flow : 1.5L/min  
CDL Temp : 250  
Block Temp : 200

Equipment : ZJ22010150  
Interface Bias : -3.5 kV  
Drying Gas Flow : 5 L/min  
T.Flow : 0.2 ml/min  
B.conc : 50% H<sub>2</sub>O/50% MeOH