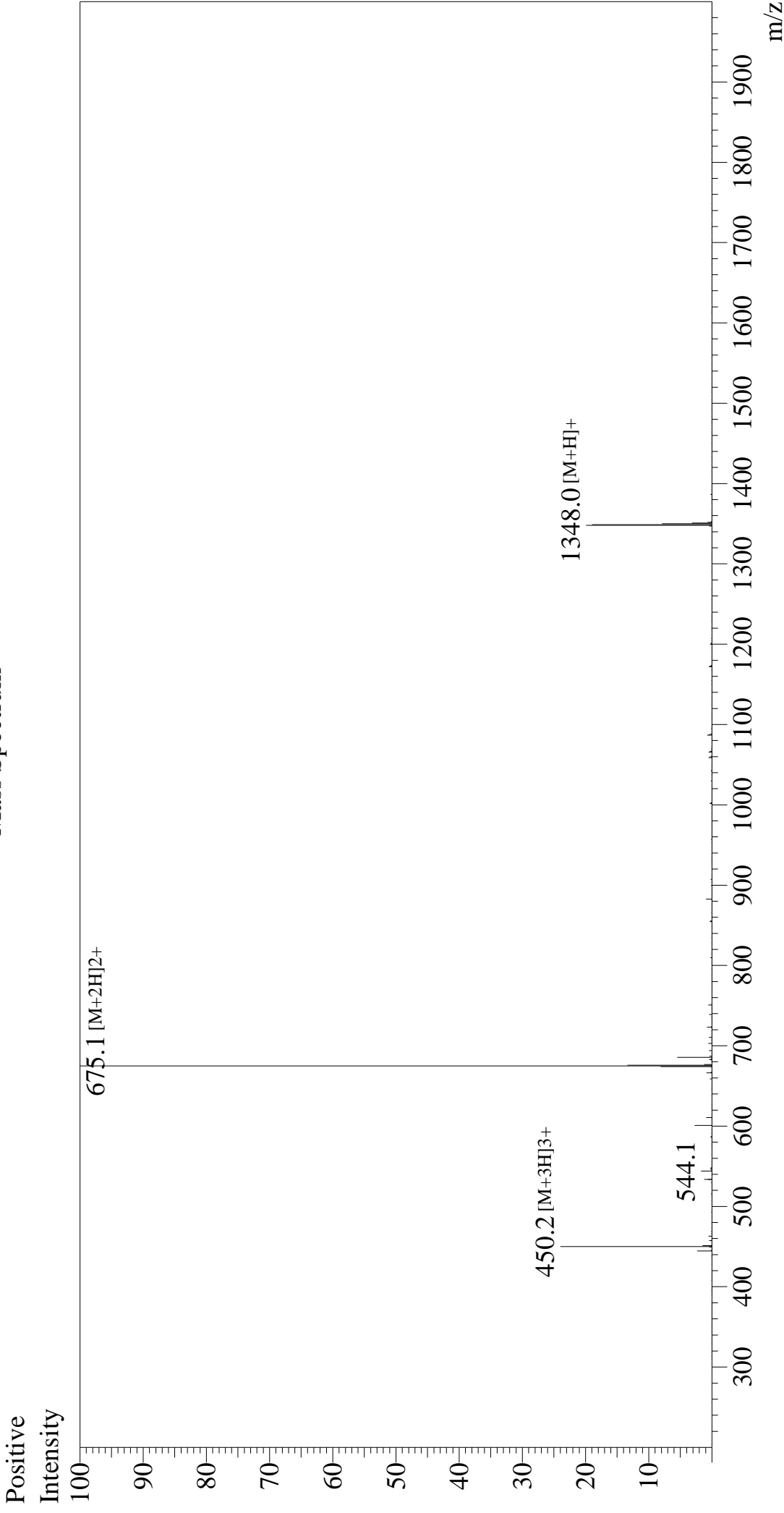


Mass Spectrum



Sample Information
Month-Day Processed : 01/17/26
Time Processed : 9:01:29
Injection Volume : 0.4
Sample Name : Substance P
Cat No. : RP10178
Lot No. : E4929026A
Theoretical MW: 1347.63
Observed MW : 1348.2

Interface : ESI
Nebulizing Gas Flow : 1.5L/min
CDL Temp : 250
Block Temp : 200

Equipment : ZJ22010150
Interface Bias : +4.5 kV
Drying Gas Flow : 5 L/min
T.Flow : 0.2 ml/min
B.conc : 50% H₂O/50% MeOH