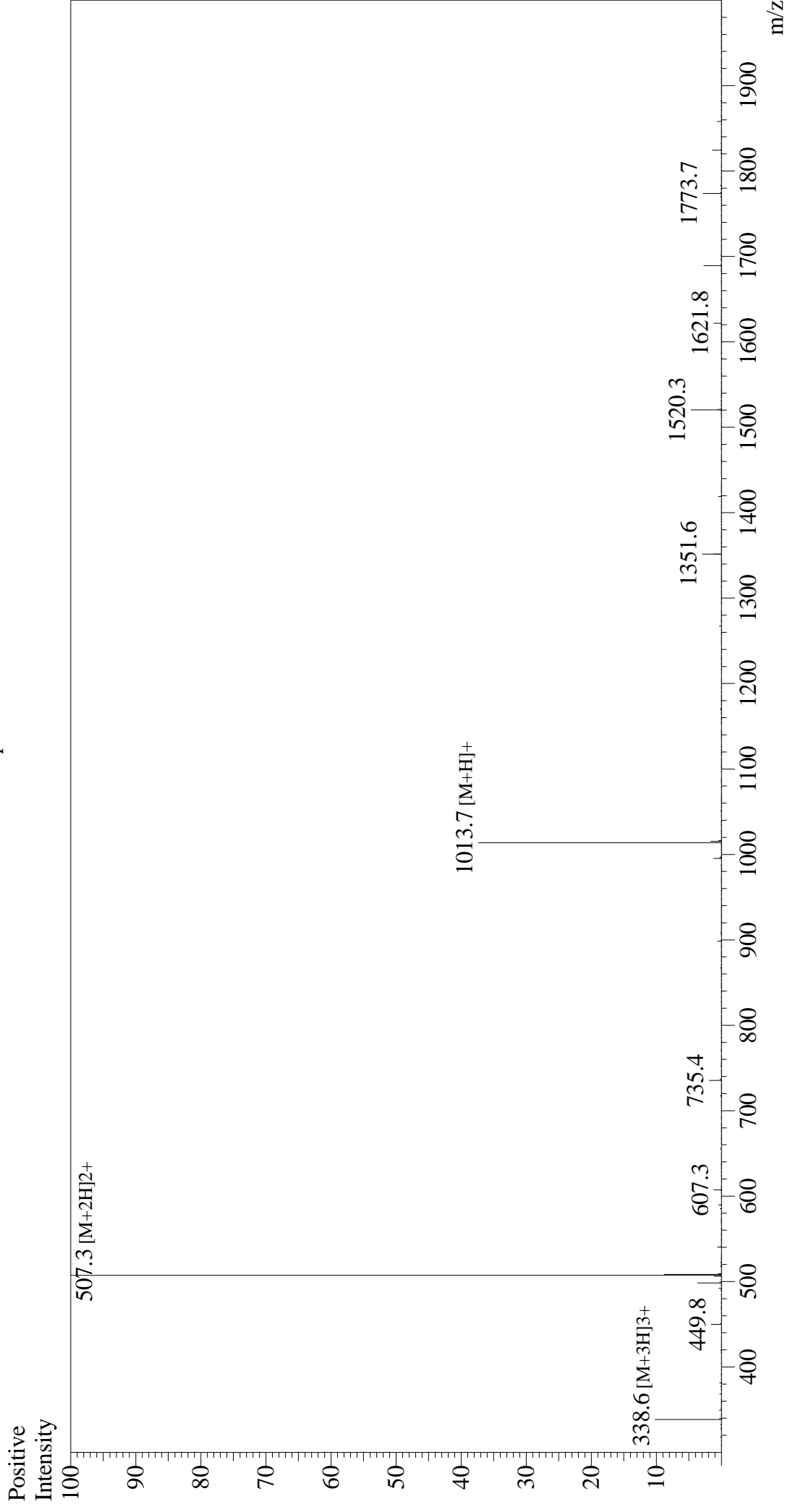


# Mass Spectrum



## Sample Information

Month-Day Processed : 01/04/25  
 Time Processed : 22:49:14  
 Injection Volume : 0.4  
 Sample Name : DYKDDDDDK Peptide  
 Cat No. : RP10586  
 Lot No. : E4543925A  
 Theoretical MW : 1012.97  
 Observed MW : 1012.6

Interface : ESI  
 Nebulizing Gas Flow : 1.5L/min  
 CDL Temp : 250  
 Block Temp : 200

Equipment : ZJ22010150  
 Interface Bias : +4.5 kV  
 Drying Gas Flow : 5 L/min  
 T.Flow : 0.2 ml/min  
 B.conc : 50% H<sub>2</sub>O/50% MeOH