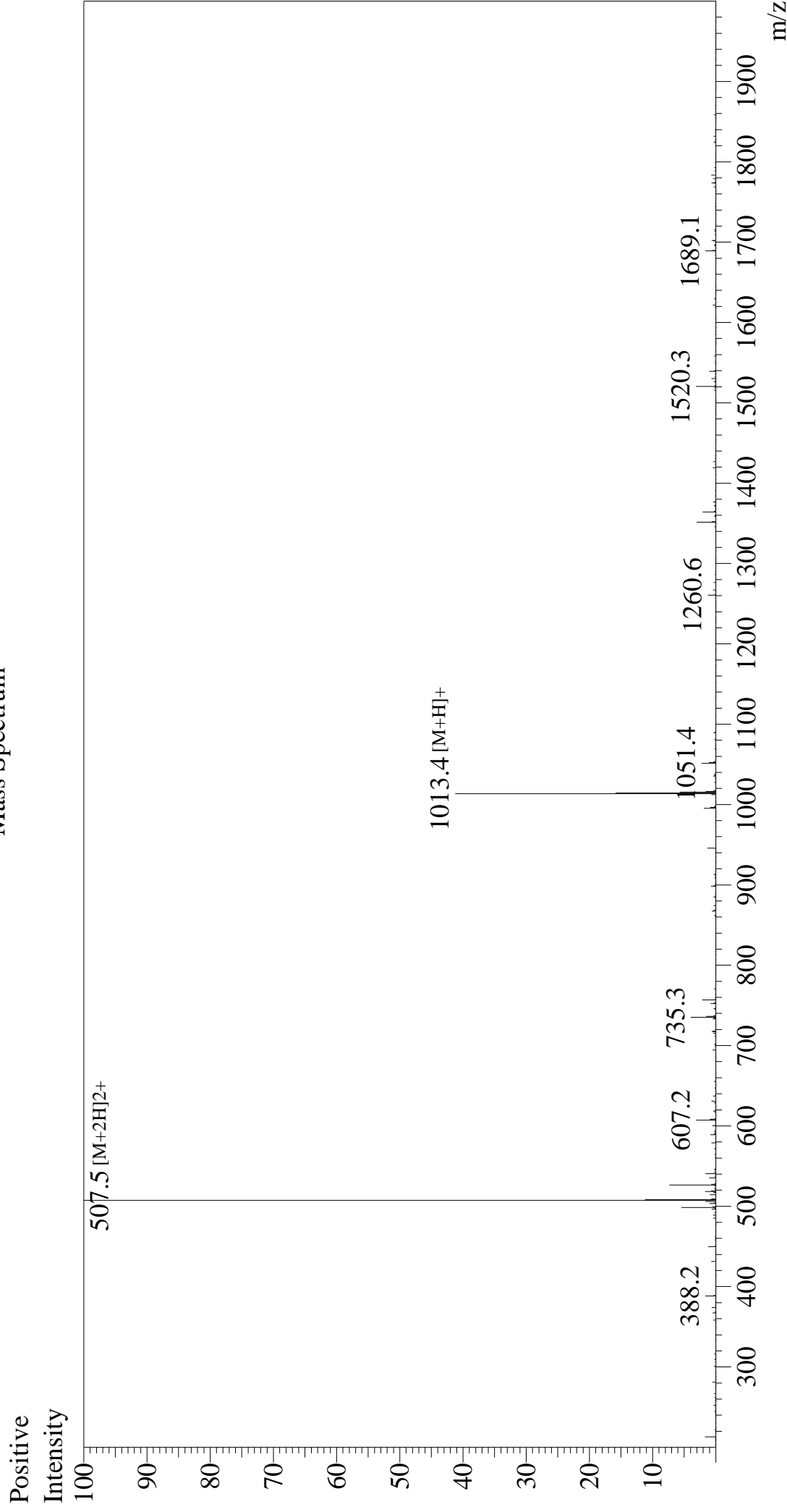


Mass Spectrum



Sample Information

Month-Day Processed : 09/28/24
Time Processed : 1:58:04 PM
Injection Volume : 0.5
Sample Name : DYKDDDDDK Peptide
Cat No. : RP10586
Lot No. : E4342224I
Theoretical MW : 1012.97
Observed MW : 1013.0

Interface

Nebulizing Gas Flow : 1.5L/min
CDL Temp : 250
Block Temp : 200

:ESI

Interface Bias : +4.5 kV
Drying Gas Flow : 5 L/min
T.Flow : 0.2 ml/min
B.conc : 50%H2O/50%MeOH

Equipment

Equipment : ZI21010035