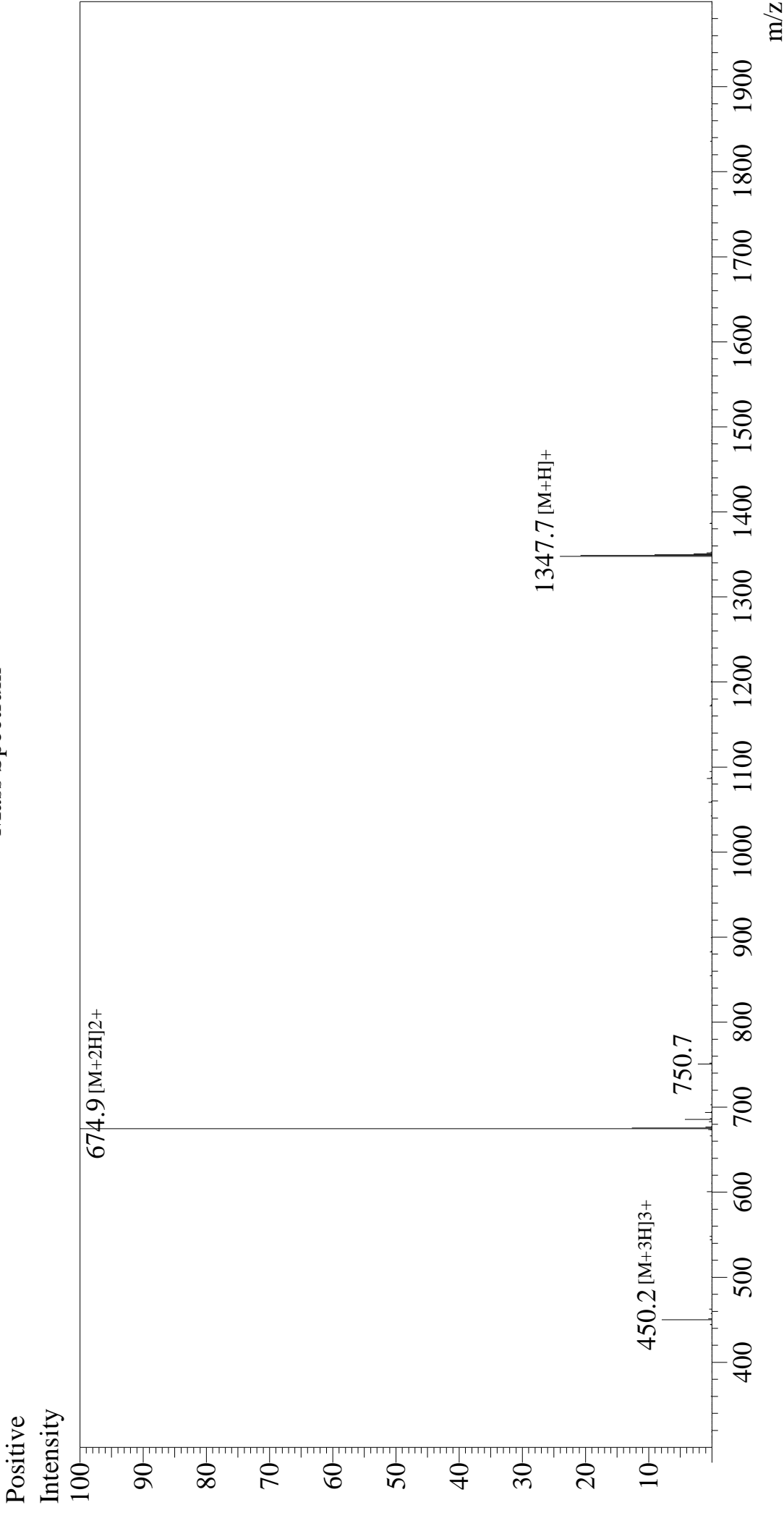


# Mass Spectrum



## Sample Information

Month-Day Processed : 03/17/26  
Time Processed : 7:25:25 AM  
Injection Volume : 0.4  
Sample Name : Substance P

Cat No. : RP10178  
Lot No. : E432226C

Theoretical MW: 1347.63  
Observed MW : 1347.8

Interface : ESI  
Nebulizing Gas Flow : 1.5L/min  
CDL Temp : 250  
Block Temp : 200

Equipment : ZJ22010150  
Interface Bias : +4.5 kV  
Drying Gas Flow : 5 L/min  
T.Flow : 0.2 ml/min  
B.conc : 50%H<sub>2</sub>O/50%M