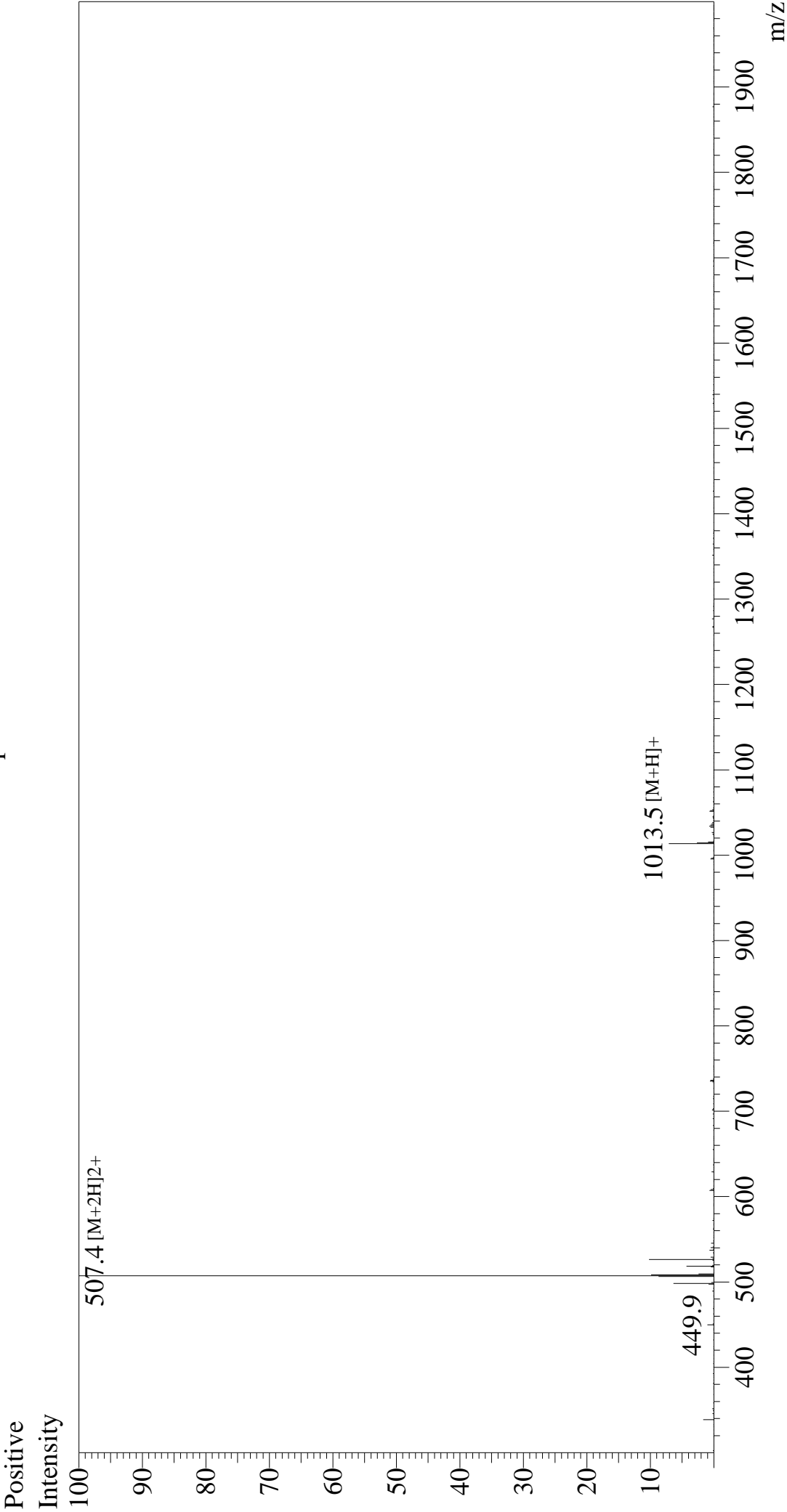


Mass Spectrum



| | | | | | |
|------------------------|------------------|---------------------|-----------|-----------------|--------------|
| Sample Information | | Interface | :ESI | Equipment | : ZI21010035 |
| Month-Day Processed : | 11/24/22 | Nebulizing Gas Flow | :1.5L/min | Interface Bias | : +4.5 kV |
| Time Processed : | 20:35:32 | CDL Temp | :250 | Drying Gas Flow | :5 L/min |
| Injection Volume : | 0.2 | Block Temp | :200 | T.Flow | :0.2 ml/min |
| Sample Name : | DYKDDDDK Peptide | | | B.conc | :50%H2O/50%M |
| Cat No. : | RP10586 | | | | |
| Lot No. : | E4286922K | | | | |
| Theoretical MW:1012.97 | | | | | |
| Observed MW : 1012.8 | | | | | |