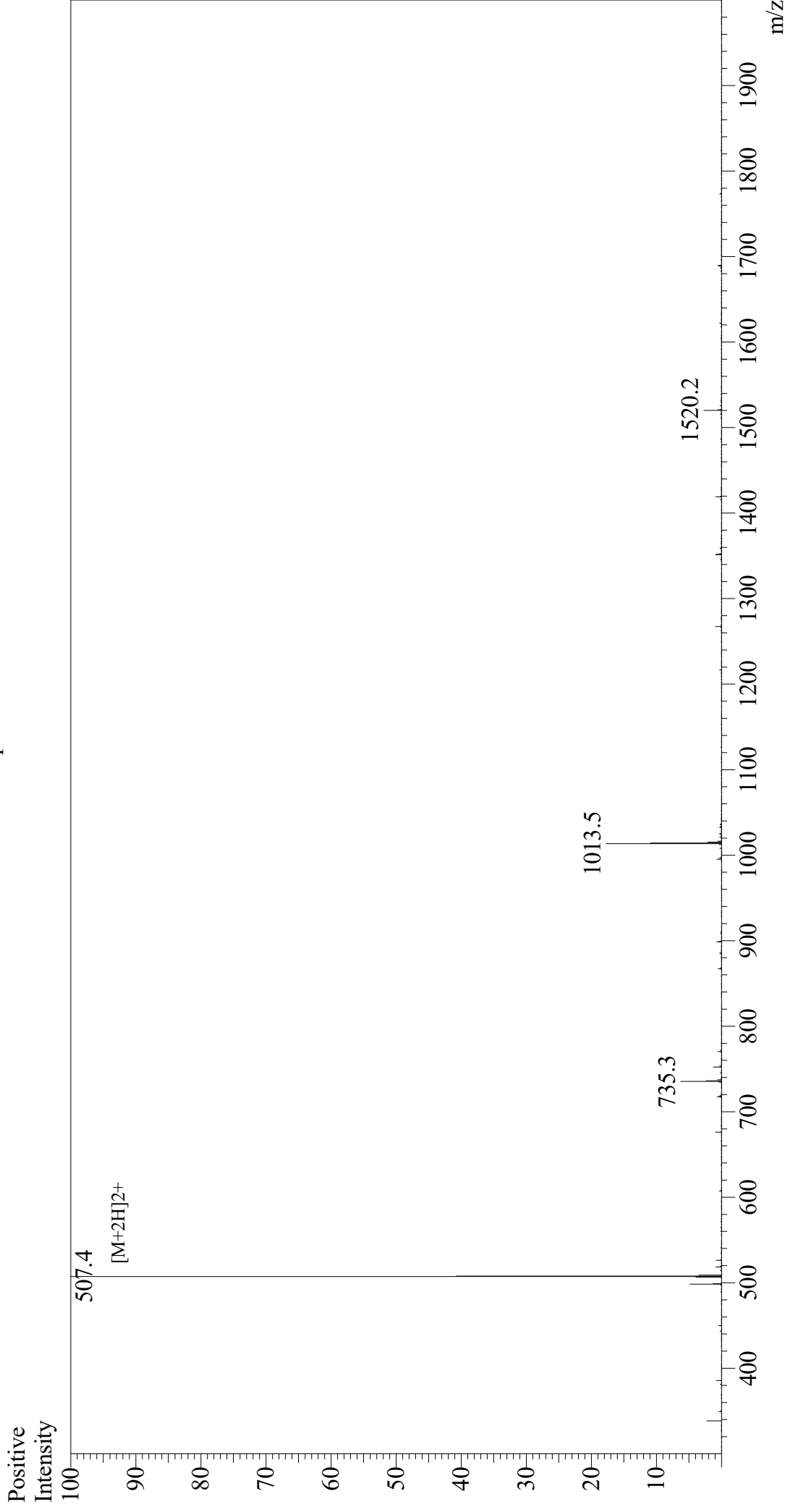


# Mass Spectrum



Sample Information  
 Month-Day Processed : 03/18/22  
 Time Processed : 23:30:03  
 Injection Volume : 0.2  
 Sample Name : DYKDDDDDK Peptide  
 Cat No. : RP10586  
 Lot No. : E4278922C  
 Theoretical MW : 1012.97  
 Observed MW : 1012.8

Interface : ESI  
 Nebulizing Gas Flow : 1.5L/min  
 CDL Temp : 250  
 Block Temp : 200  
 Equipment : ZJ21010035  
 Interface Bias : +4.5 kV  
 Drying Gas Flow : 5 L/min  
 T.Flow : 0.2 ml/min  
 B.conc : 50%H2O/50%MeOH