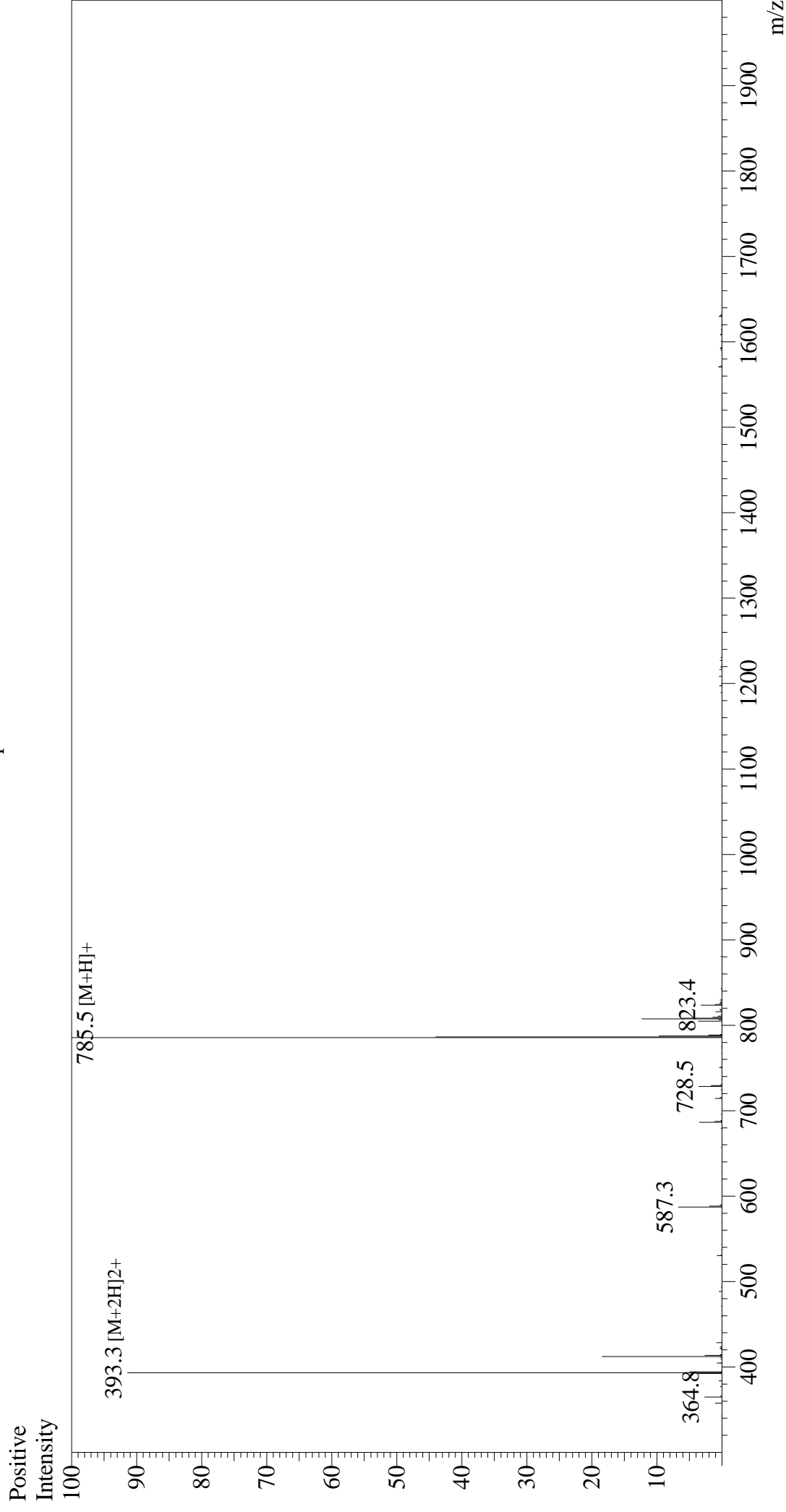


Mass Spectrum



Sample Information

Month-Day Processed : 02/28/24

Time Processed : 9:03:30

Injection Volume : 0.3

Sample Name : KRAS G12V Peptide (VVGAVGVGK)

Cat No. : RP30228

Lot No. : E4106824B

Theoretical MW : 784.95

Observed MW : 784.5

Interface

Nebulizing Gas Flow : 1.5L/min

CDL Temp : 250

Block Temp : 200

Equipment

Interface Bias : +4.5 kV

Drying Gas Flow : 5 L/min

T.Flow : 0.2 ml/min

B.conc : 50% H₂O / 50% MeOH