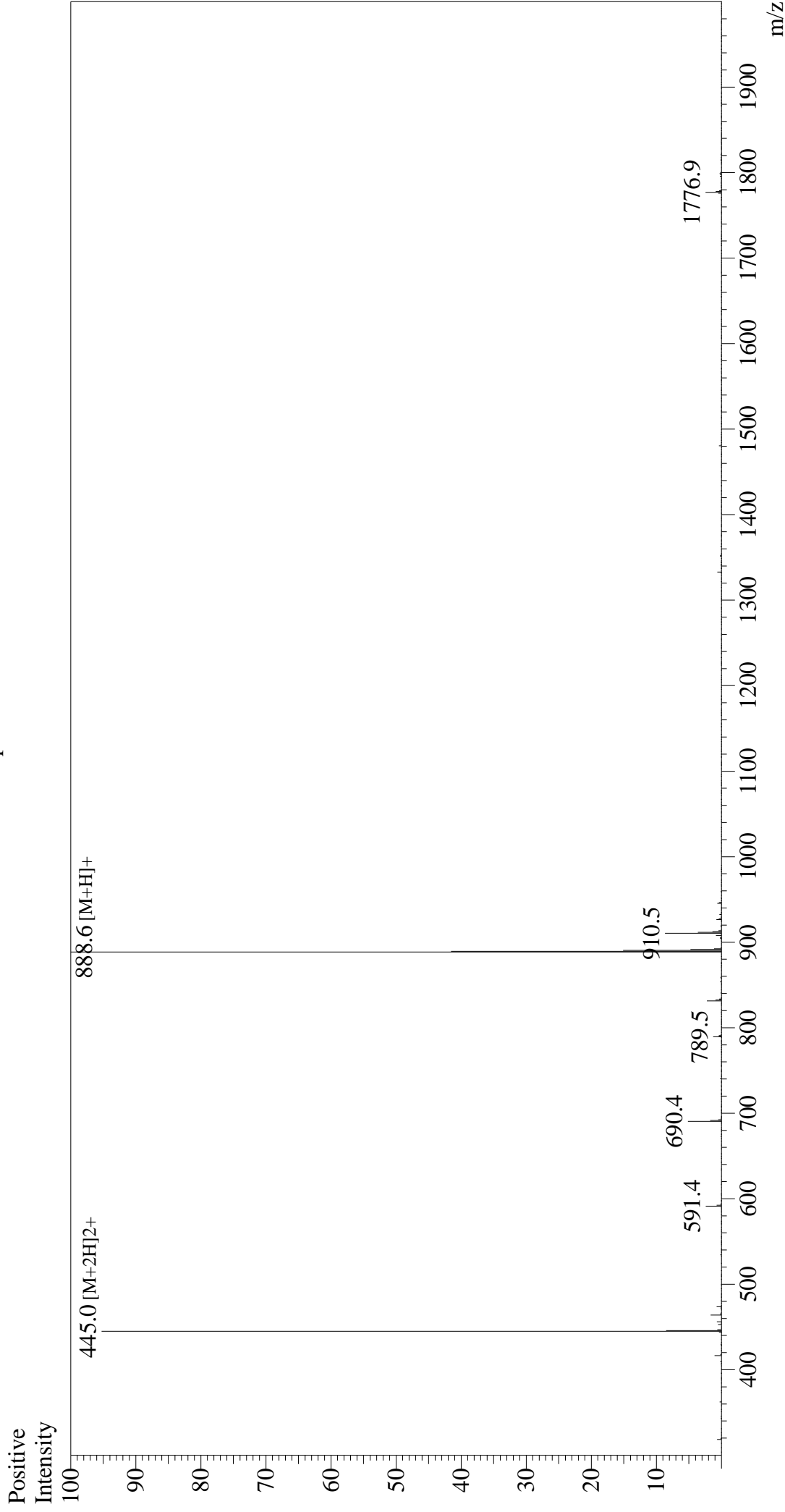


Mass Spectrum



Sample Information
Month-Day Processed : 02/26/26
Time Processed : 20:32:18
Injection Volume : 0.3
Sample Name : KRAS G12C Peptide (VVVGACGVGK)
Cat No. : RP30236
Lot No. : E3727926B
Theoretical MW: 888.09
Observed MW : 887.6

Interface : ESI
Nebulizing Gas Flow : 1.5L/min
CDL Temp : 250
Block Temp : 200

Equipment : ZJ22010150
Interface Bias : +4.5 kV
Drying Gas Flow : 5 L/min
T.Flow : 0.2 ml/min
B.conc : 50% H2O/50% MeOH