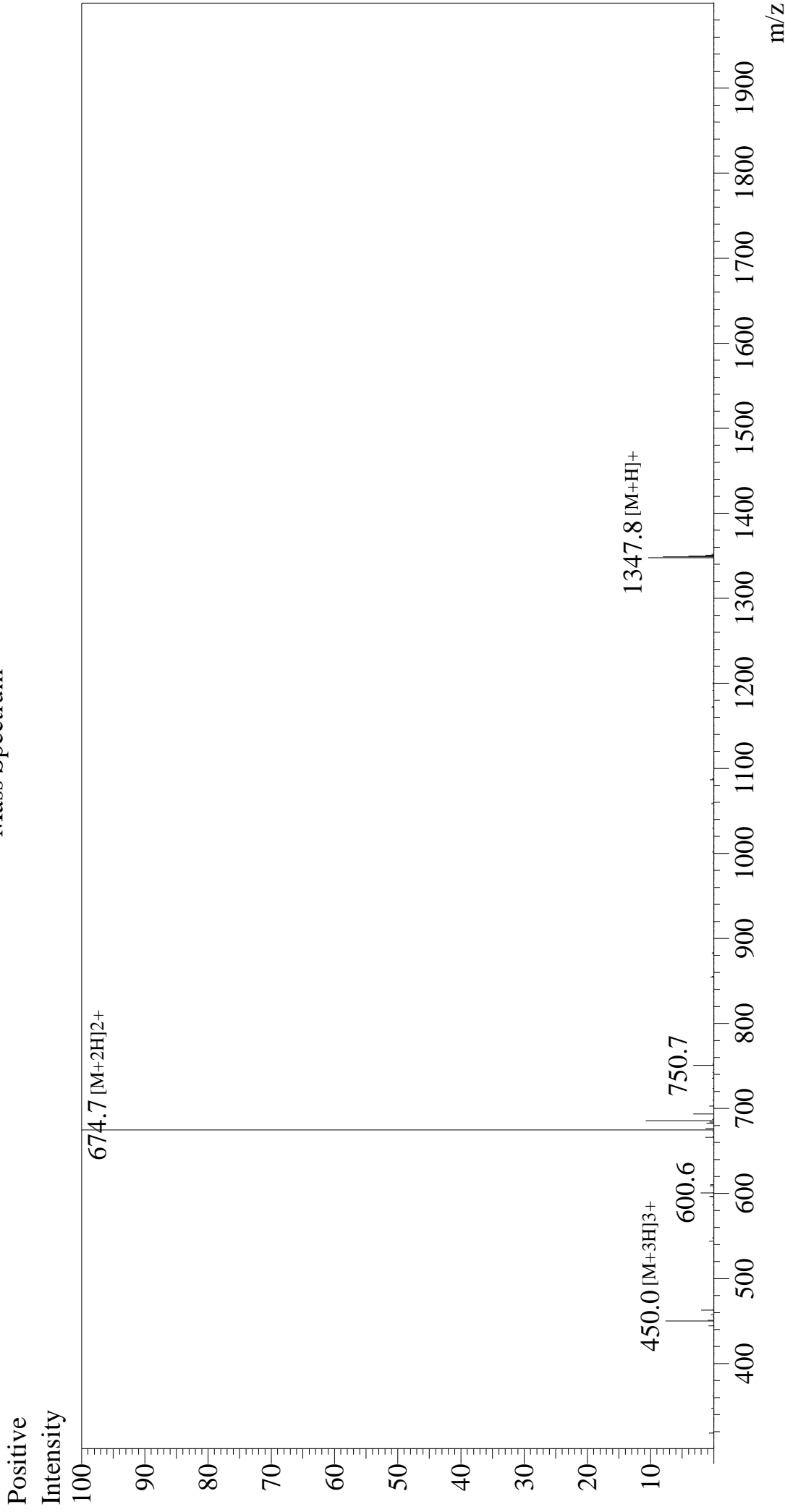


Mass Spectrum



Sample Information

Month-Day Processed : 01/27/26
Time Processed : 19:27:20
Injection Volume : 0.4
Sample Name : Substance P
Cat No. : RP10178

Interface

Interface : ESI
Nebulizing Gas Flow : 1.5L/min
CDL Temp : 250
Block Temp : 200

Equipment

Equipment : ZI21010035
Interface Bias : +4.5 kV
Drying Gas Flow : 5 L/min
T.Flow : 0.2 ml/min
B.conc : 50%H2O/50%MeOH

Lot No. : E3642026A
Theoretical MW : 1347.63
Observed MW : 1347.4