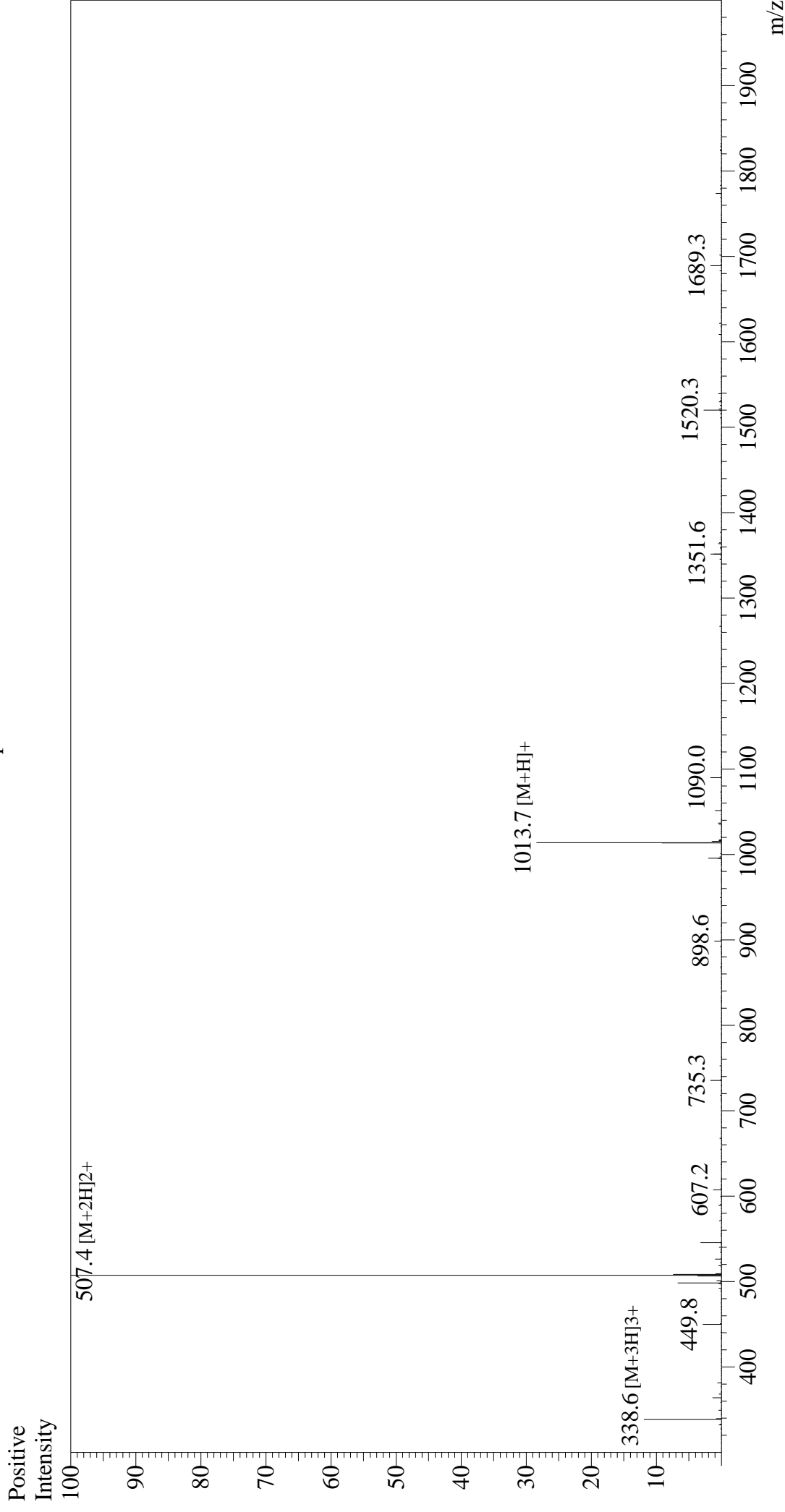


Mass Spectrum



Sample Information

Month-Day Processed : 11/21/24
 Time Processed : 20:56:43
 Injection Volume : 0.3
 Sample Name : DYKDDDDDK Peptide
 Cat No. : RP10586
 Lot No. : E3455824K
 Theoretical MW: 1012.97
 Observed MW : 1012.8

Interface : ESI
 Nebulizing Gas Flow : 1.5L/min
 CDL Temp : 250
 Block Temp : 200
 Equipment : ZJ22010150
 Interface Bias : +4.5 kV
 Drying Gas Flow : 5 L/min
 T.Flow : 0.2 ml/min
 B.conc : 50% H₂O/50% MeOH