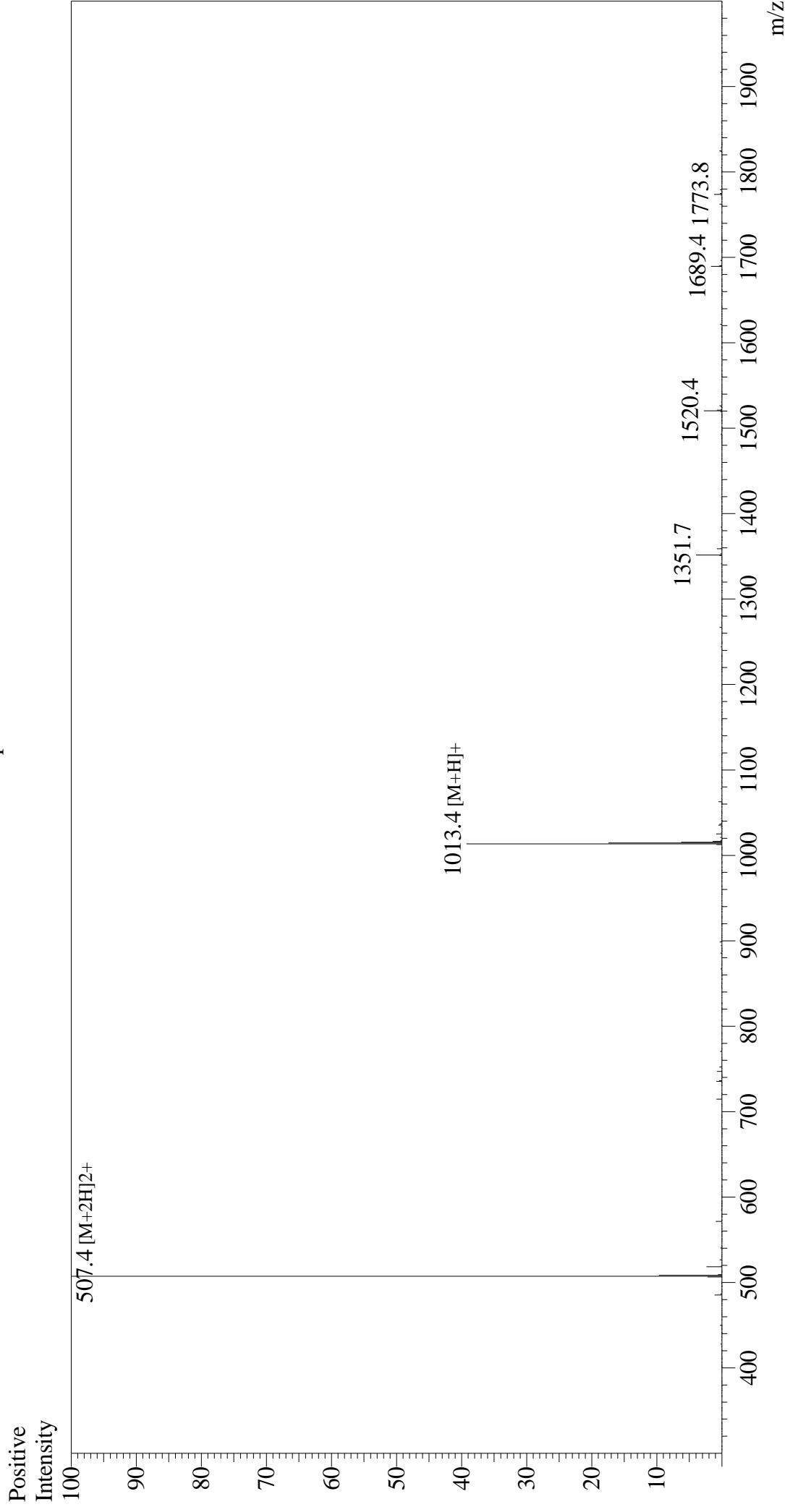


Mass Spectrum



Sample Information

Month-Day Processed : 03/14/25

Time Processed : 15:18:19

Injection Volume : 0.4

Sample Name : DYKDDDDDK Peptide

Cat No. : RP10586

Lot No. : E2978925C

Theoretical MW: 1012.97

Observed MW: 1012.8

Interface :ESI

Nebulizing Gas Flow :1.5L/min

CDL Temp :250

Block Temp :200

Equipment : ZJ21010035

Interface Bias : +4.5 kV

Drying Gas Flow :5 L/min

T.Flow :0.2 ml/min

B.conc :50%H2O/50%MeOH