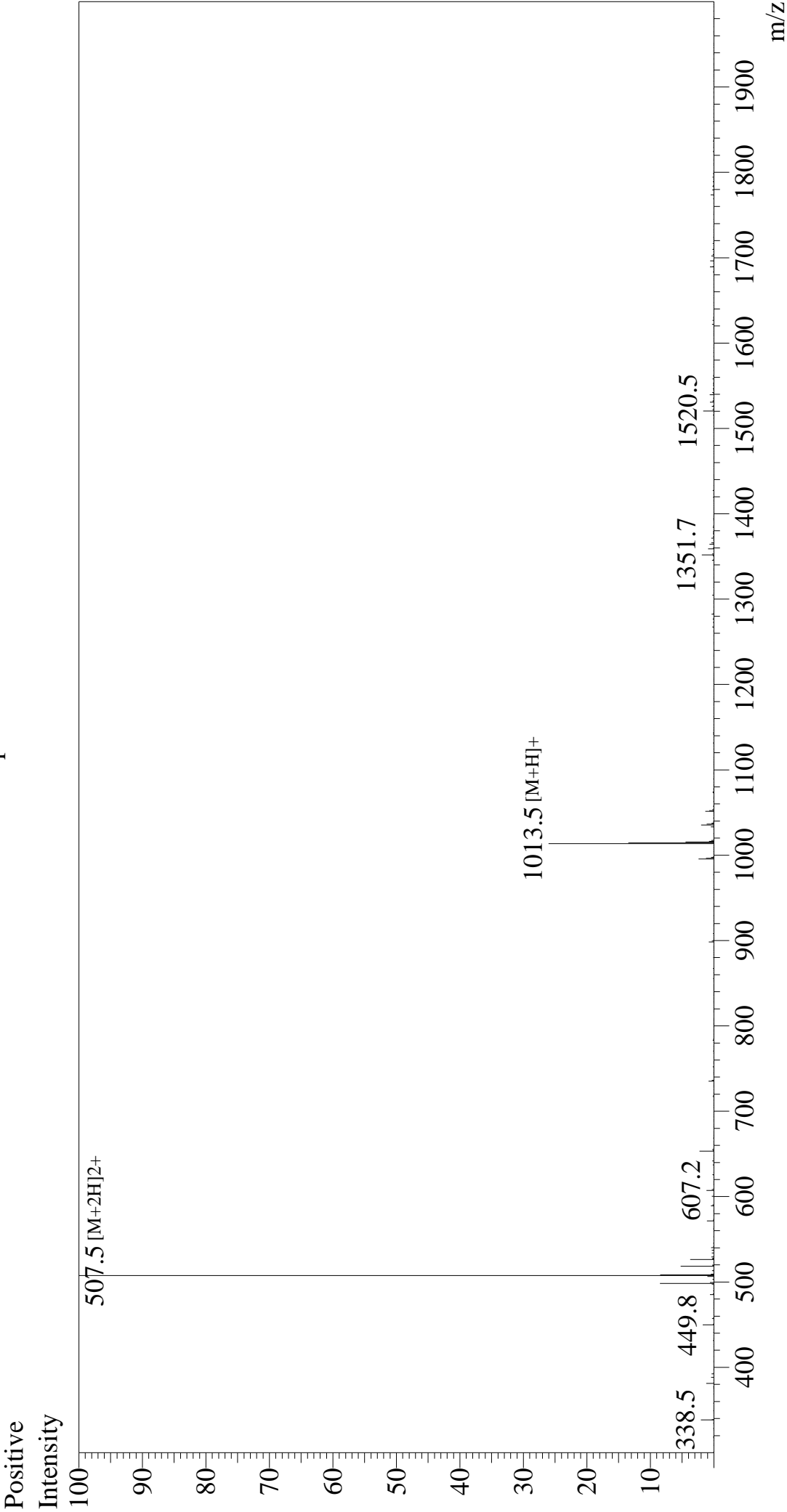


Mass Spectrum



Sample Information		Interface		Equipment	
Month-Day Processed :	03/14/24	Nebulizing Gas Flow :	ESI	Interface Bias	:ZJ22010150
Time Processed :	6:58:10 PM	CDL Temp :	:1.5L/min	Drying Gas Flow	: +4.5 kV
Injection Volume :	0.3	Block Temp :	:250	T.Flow	:5 L/min
Sample Name :	DYKDDDDDK Peptide			B.conc	:0.2 ml/min
Cat No. :	RP10586				:50% H2O/50% MeOH
Lot No. :	E2687624B				
Theoretical MW:	1012.97				
Observed MW :	1013.0				