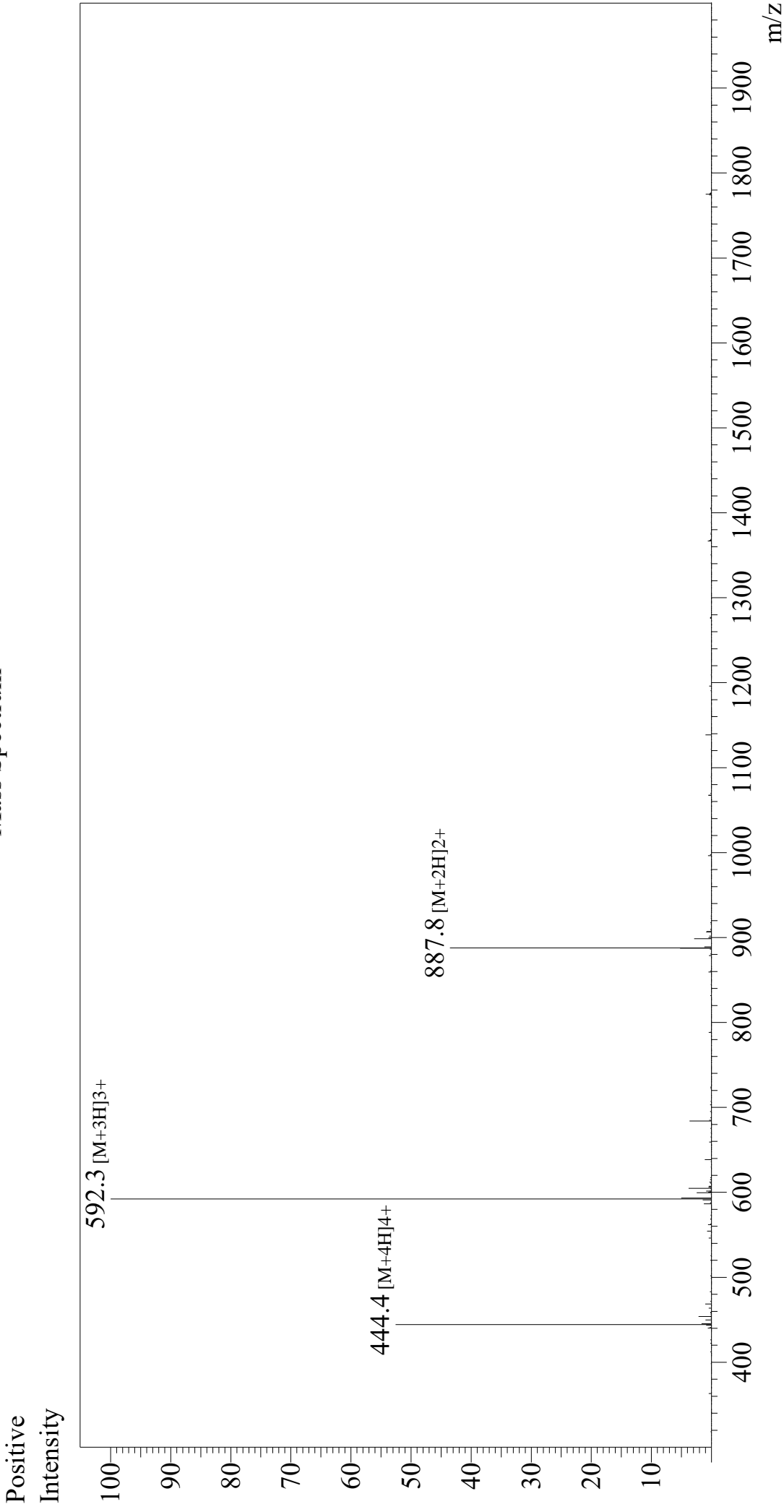


Mass Spectrum



Sample Information
Month-Day Processed : 06/07/26
Time Processed : 9:05:20
Injection Volume : 0.5
Sample Name : OVA Peptide (323-339)
Cat No. : RP10610
Lot No. : E1993226F
Theoretical MW: 1773.91
Observed MW : 1773.9

Interface : ESI
Nebulizing Gas Flow : 1.5L/min
CDL Temp : 250
Block Temp : 200

Equipment : Z121010035
Interface Bias : +4.5 kV
Drying Gas Flow : 5 L/min
T.Flow : 0.2 ml/min
B.conc : 50% H₂O/50% MeOH