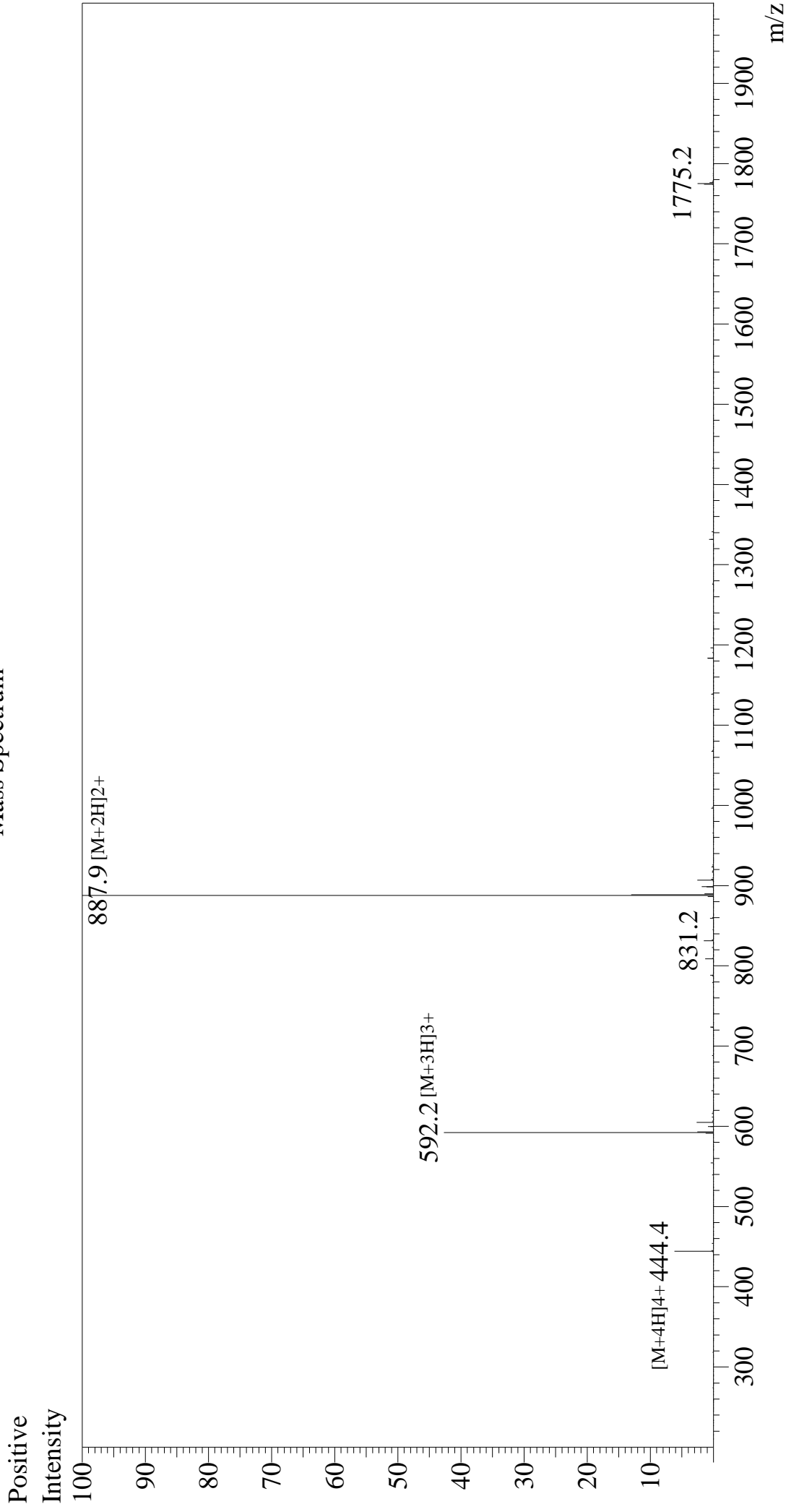


Mass Spectrum



Sample Information

Month-Day Processed : 12/22/25
Time Processed : 21:36:02
Injection Volume : 0.3
Sample Name : OVA Peptide (323-339)
Cat No. : RP10610

Interface : ESI

Nebulizing Gas Flow : 1.5L/min
CDL Temp : 250
Block Temp : 200

Equipment

: ZI21010035
Interface Bias : +4.5 kV
Drying Gas Flow : 5 L/min
T.Flow : 0.2 ml/min
B.conc : 50%H2O/50%MeOH

Lot No. : E1882625L
Theoretical MW: 1773.91
Observed MW : 1773.8