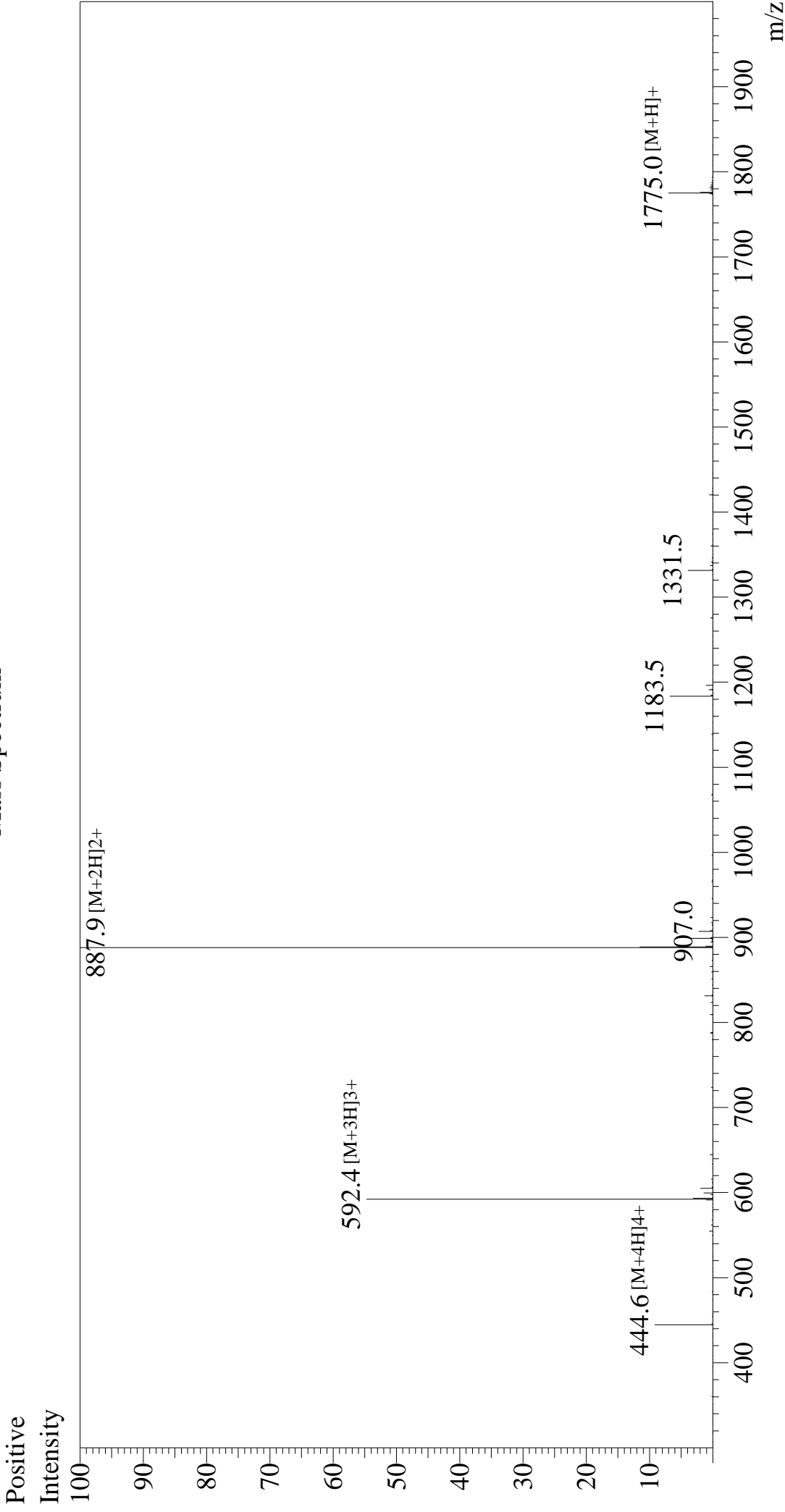


# Mass Spectrum



Sample Information  
Month-Day Processed : 03/17/26  
Time Processed : 7:26:00 AM  
Injection Volume : 0.4  
Sample Name : OVA Peptide (323-339)  
Cat No. : RP10610  
Lot No. : E1558526C  
Theoretical MW: 1773.91  
Observed MW : 1773.8

Interface : ESI  
Nebulizing Gas Flow : 1.5L/min  
CDL Temp : 250  
Block Temp : 200

Equipment : ZJ22010150  
Interface Bias : +4.5 kV  
Drying Gas Flow : 5 L/min  
T.Flow : 0.2 ml/min  
B.conc : 50%H2O/50%M