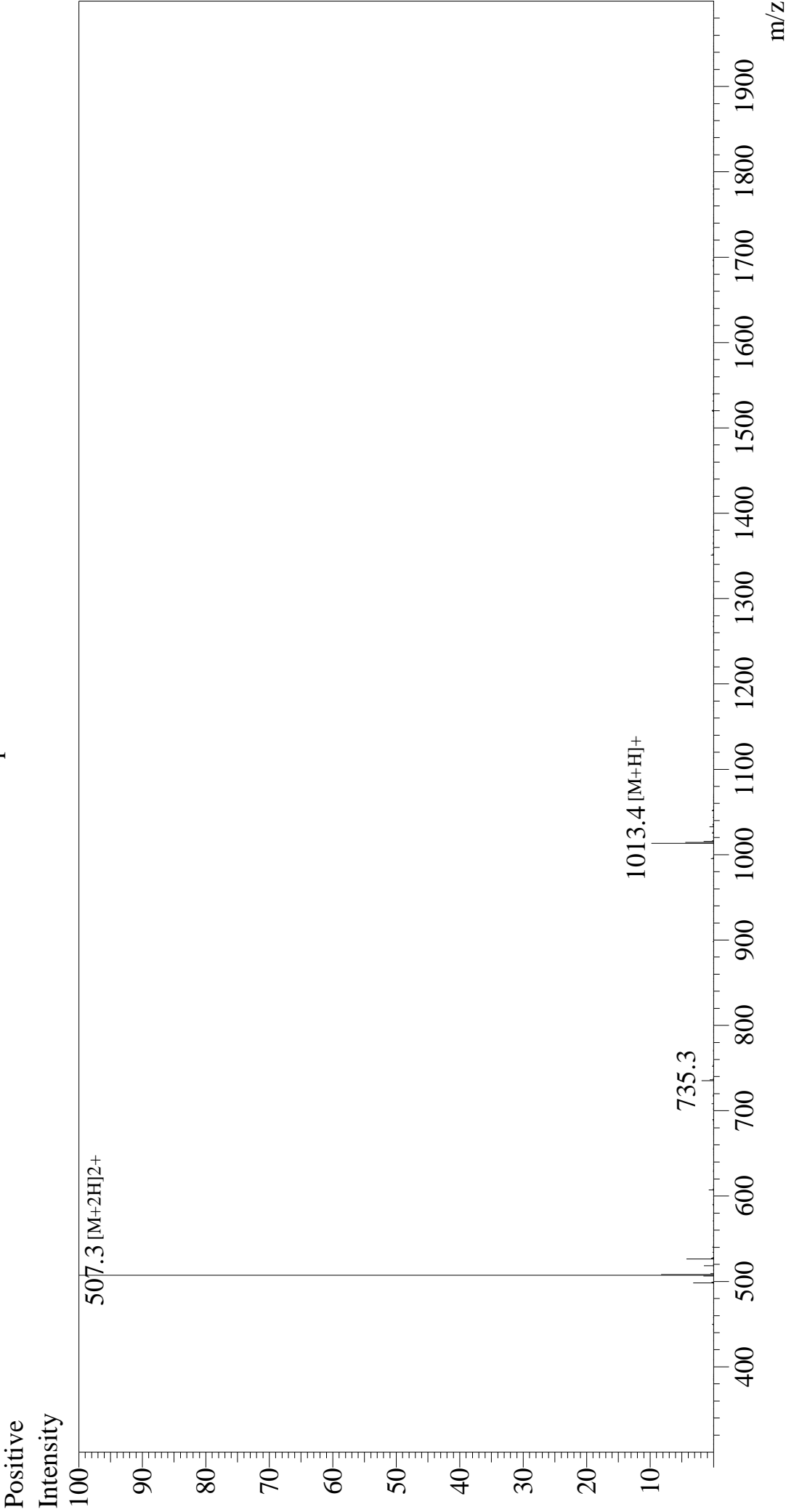


Mass Spectrum



Sample Information		Interface	:ESI	Equipment	: ZI21010035
Month-Day Processed :	01/11/23	Nebulizing Gas Flow	:1.5L/min	Interface Bias	: +4.5 kV
Time Processed :	20:27:23	CDL Temp	:250	Drying Gas Flow	:5 L/min
Injection Volume :	0.2	Block Temp	:200	T.Flow	:0.2 ml/min
Sample Name :	DYKDDDDK Peptide			B.conc	:50%H2O/50%M
Cat No. :	RP10586				
Lot No. :	E1281723A				
Theoretical MW:1012.97					
Observed MW :1012.6					