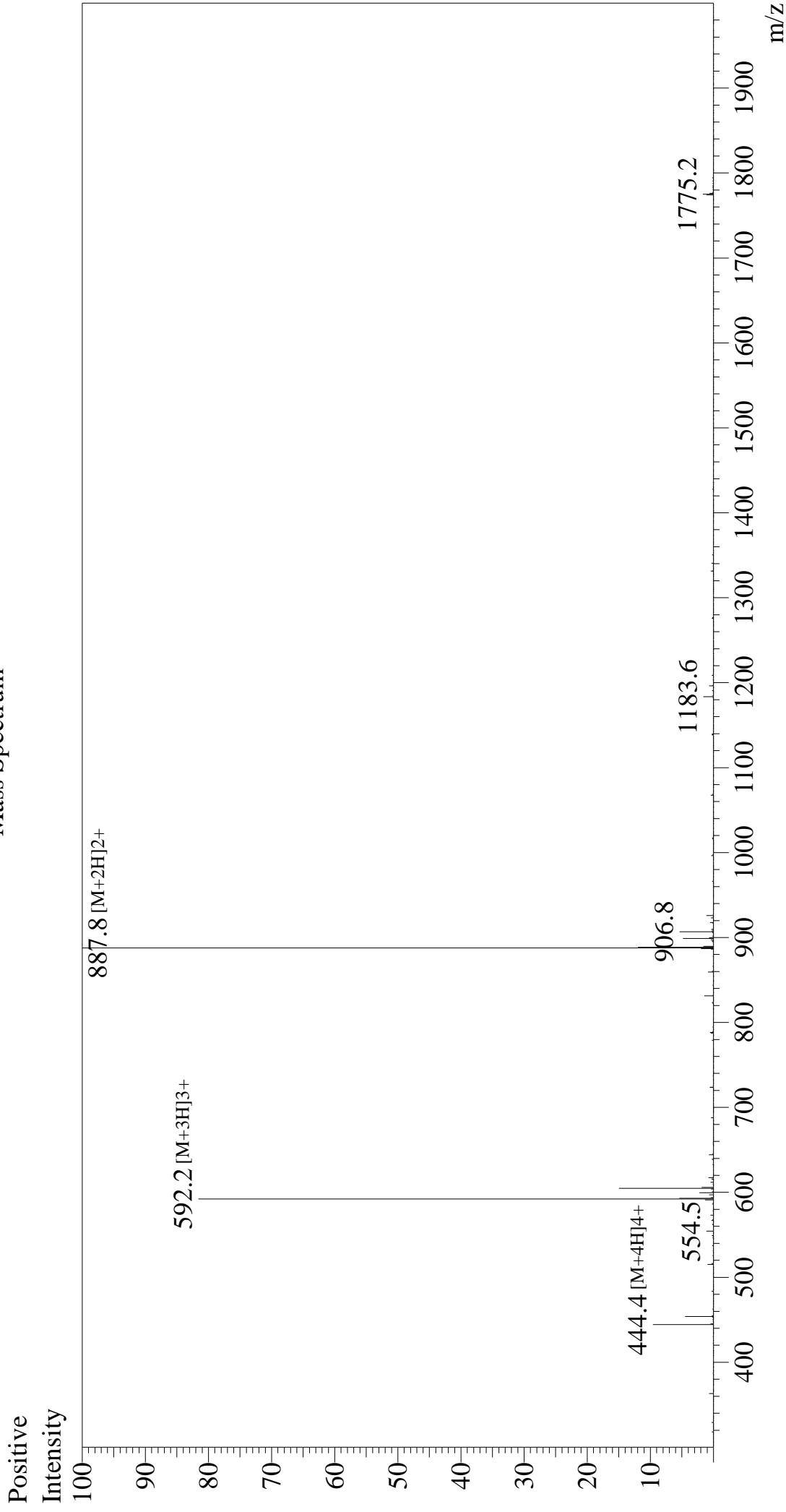


# Mass Spectrum



## Sample Information

Month-Day Processed : 03/08/26  
Time Processed : 9:04:50  
Injection Volume : 0.5  
Sample Name : OVA Peptide (323-339)  
Cat No. : RP10610

Interface : ESI  
Nebulizing Gas Flow : 1.5L/min  
CDL Temp : 250  
Block Temp : 200

Equipment : ZI21010035  
Interface Bias : +4.5 kV  
Drying Gas Flow : 5 L/min  
T.Flow : 0.2 ml/min  
B.conc : 50%H2O/50%MeOH

Lot No. : E1079026C  
Theoretical MW : 1773.91  
Observed MW : 1773.6