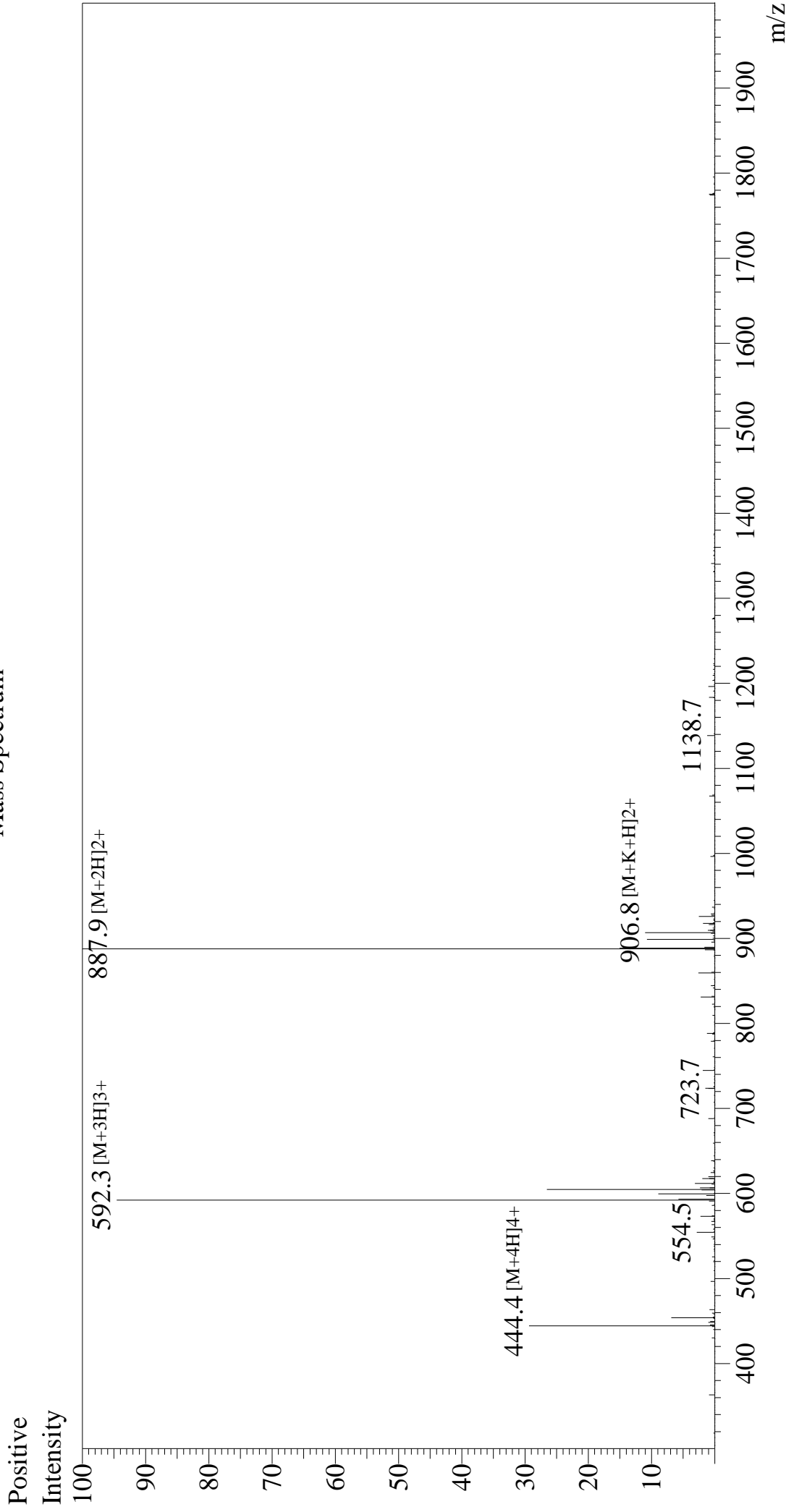


Mass Spectrum



Sample Information
 Month-Day Processed : 02/13/26
 Time Processed : 7:33:27
 Injection Volume : 0.6
 Sample Name : OVA Peptide (323-339)
 Cat No. : RP10610
 Lot No. : E1059126B
 Theoretical MW: 1773.91
 Observed MW : 1773.8

Interface : ESI
 Nebulizing Gas Flow : 1.5L/min
 CDL Temp : 250
 Block Temp : 200

Equipment : ZI21010035
 Interface Bias : +4.5 kV
 Drying Gas Flow : 5 L/min
 T.Flow : 0.2 ml/min
 B.conc : 50% H₂O/50% MeOH