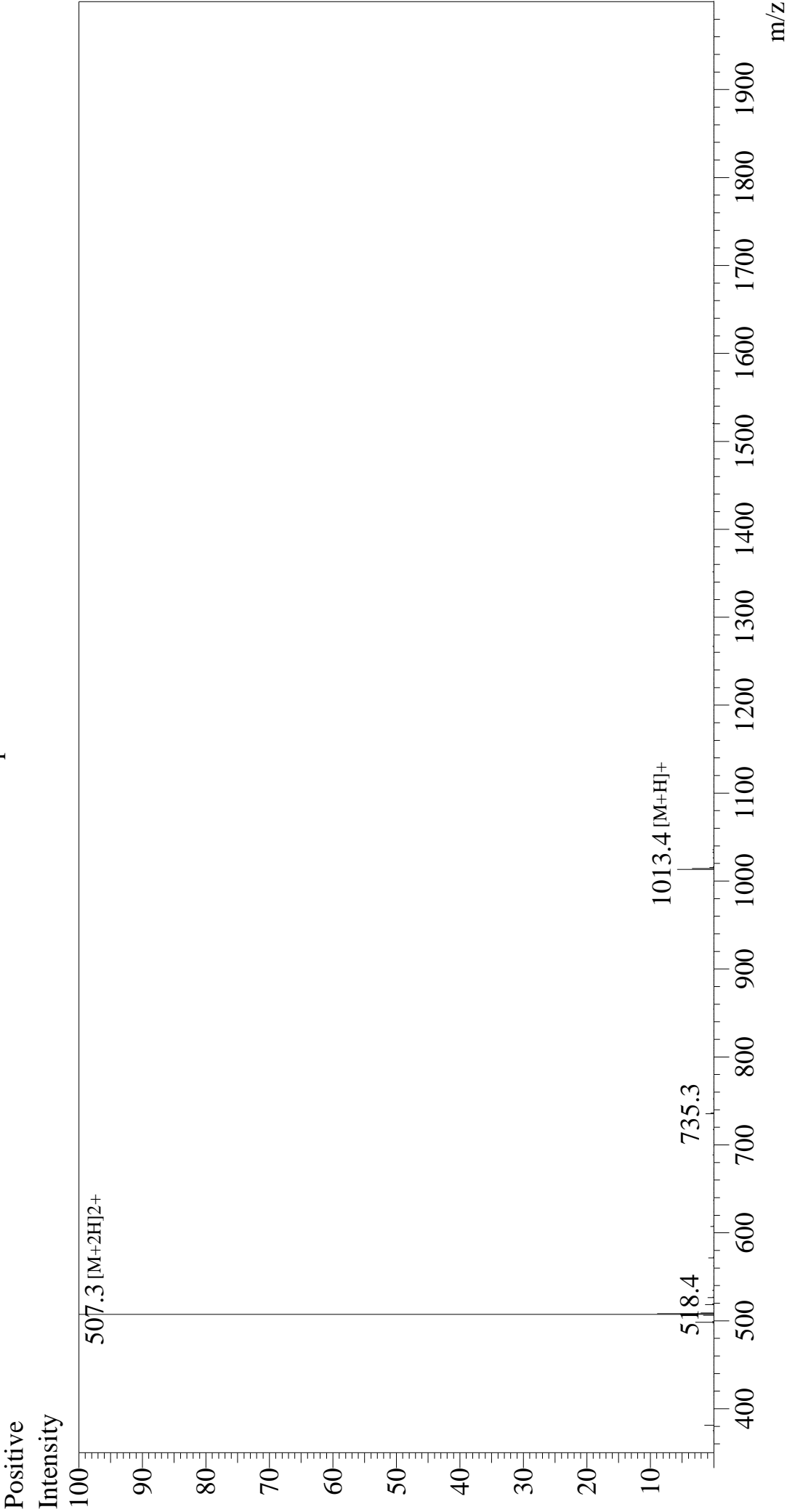


Mass Spectrum



Sample Information		Equipment	
Month-Day Processed :	07/07/22	Interface	: ZI21010035
Time Processed :	17:36:59	Nebulizing Gas Flow	: +4.5 kV
Injection Volume :	0.4	CDL Temp	: 5 L/min
Sample Name :	DYKDDDDDK Peptide	Drying Gas Flow	: 0.2 ml/min
Cat No. :	RP10586	T.Flow	: 50% H2O/50% M
Lot No. :	E0930622G	B.conc	
Theoretical MW : 1012.97			
Observed MW : 1012.6			