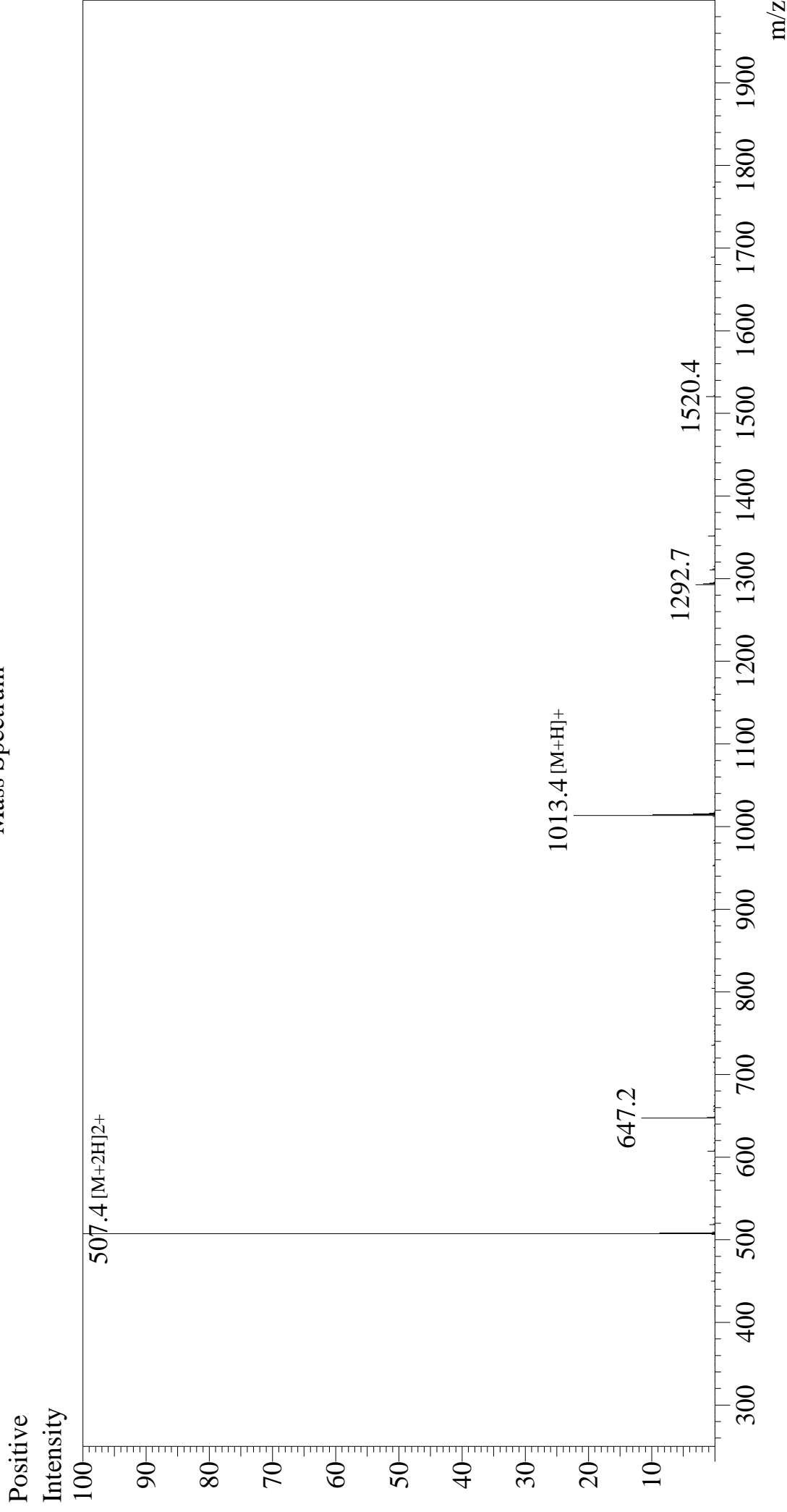


Mass Spectrum



Sample Information		Interface	:ESI	Equipment	:ZJ22010150
Month-Day Processed :	04/06/25	Nebulizing Gas Flow	:1.5L/min	Interface Bias	: +4.5 kV
Time Processed :	22:21:04	CDL Temp	:250	Drying Gas Flow	:5 L/min
Injection Volume :	0.3	Block Temp	:200	T.Flow	:0.2 ml/min
Sample Name :	DYKDDDDDK Peptide			B.conc	:50% H ₂ O/50% MeOH
Cat No. :	RP10586				
Lot No. :	E0880525D				
Theoretical MW :	1012.97				
Observed MW :	1012.8				