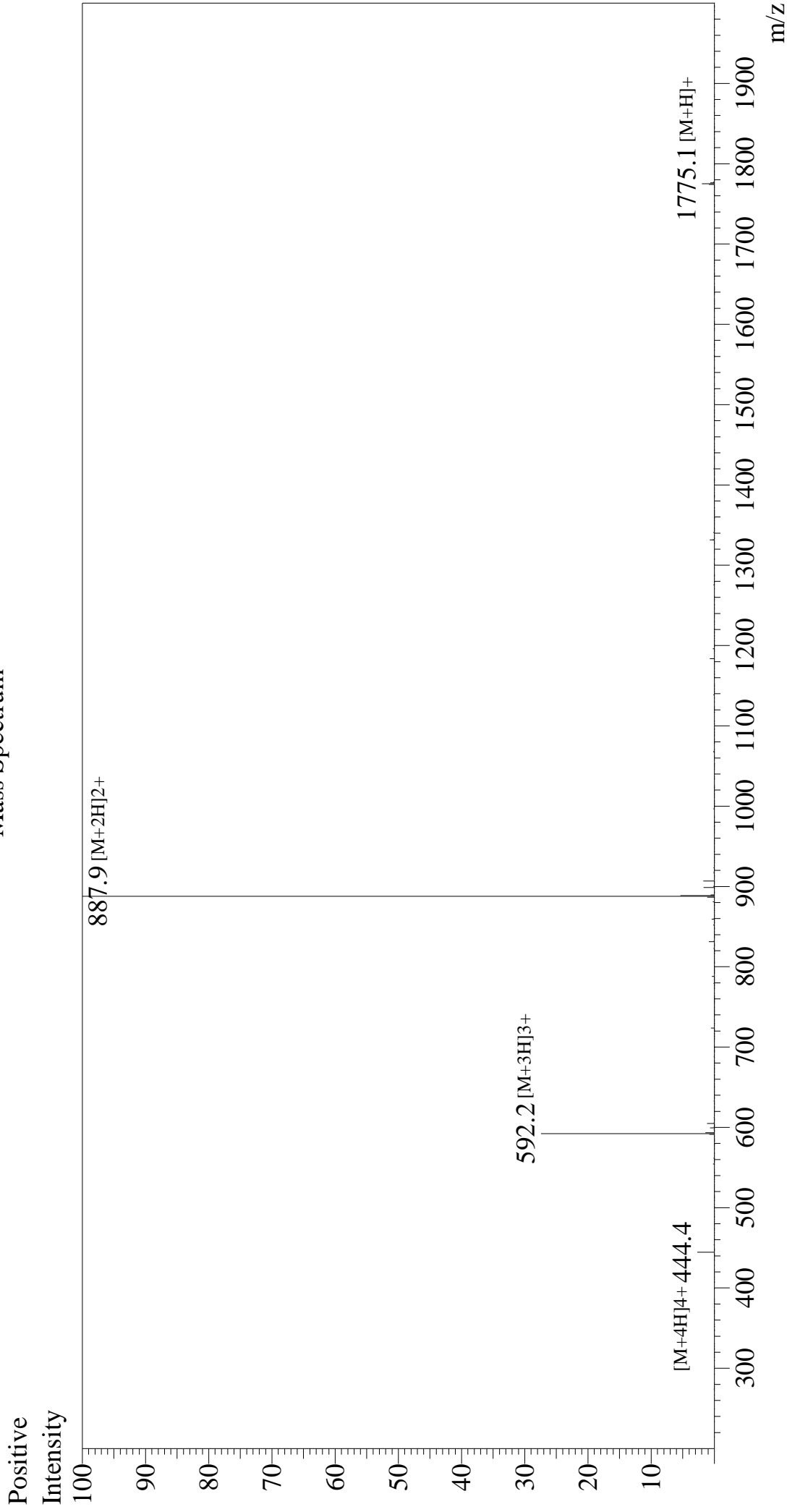


Mass Spectrum



Sample Information

Month-Day Processed : 12/22/25
Time Processed : 22:53:51
Injection Volume : 0.3
Sample Name : OVA Peptide (323-339)
Cat No. : RP10610

Interface : ESI

Nebulizing Gas Flow : 1.5L/min
CDL Temp : 250
Block Temp : 200

Equipment : ZI21010035

Interface Bias : +4.5 kV
Drying Gas Flow : 5 L/min
T.Flow : 0.2 ml/min
B.conc : 50%H2O/50%MeOH

Lot No. : E0637725L
Theoretical MW : 1773.91
Observed MW : 1773.8