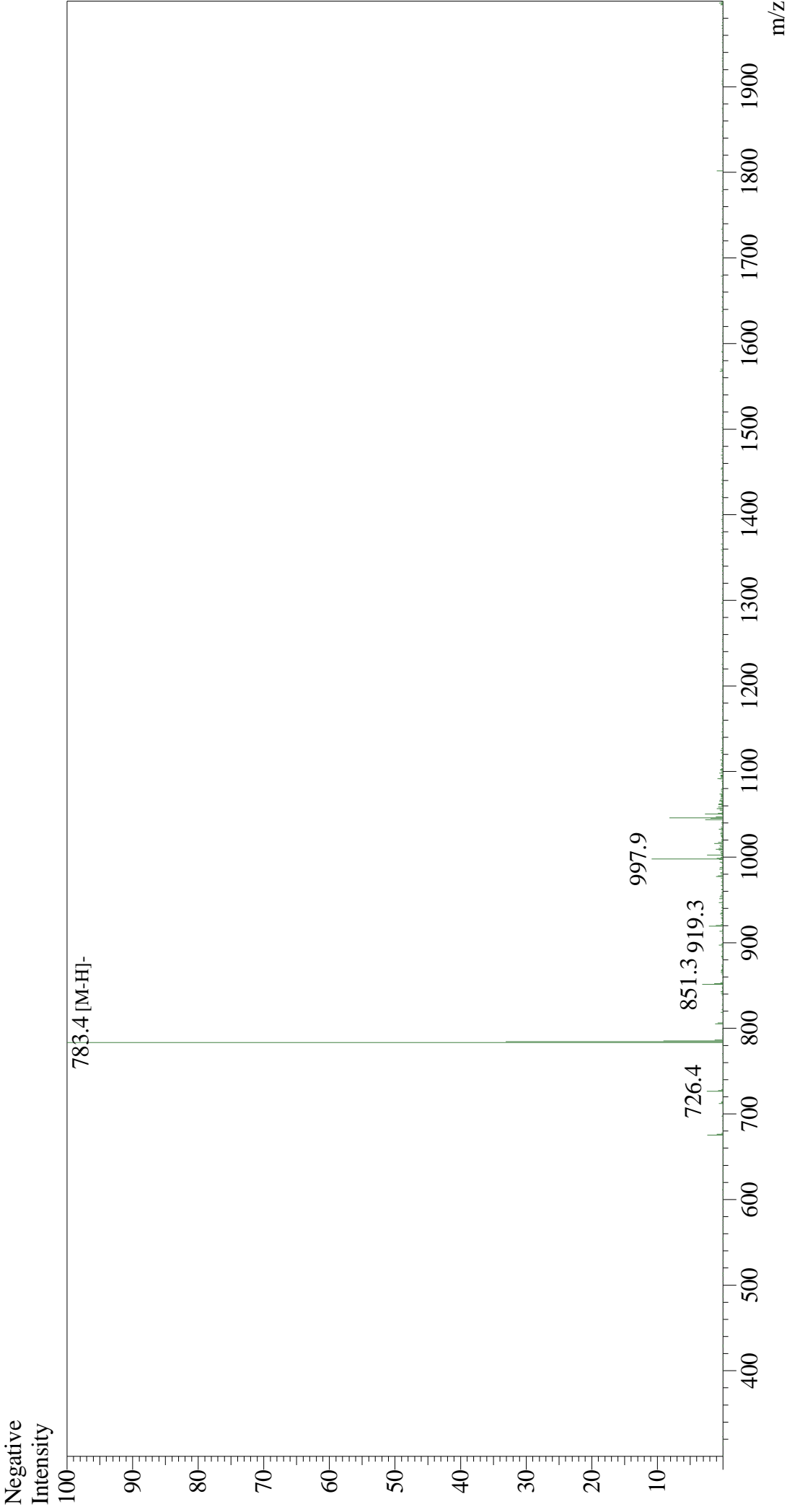


Mass Spectrum



Sample Information

Month-Day Processed : 02/24/24
Time Processed : 13:36:03
Injection Volume : 0.3

Sample Name : KRAS G12V Peptide (VVGAVGVGK)

Cat No. : RP30228

Lot No. : E0630624B

Theoretical MW : 784.95

Observed MW : 784.4

Interface : ESI
Nebulizing Gas Flow : 1.5L/min
CDL Temp : 250
Block Temp : 200

Equipment : ZJ22010150
Interface Bias : -3.5 kV
Drying Gas Flow : 5 L/min
T.Flow : 0.2 ml/min
B.conc : 50% H₂O/50% MeOH