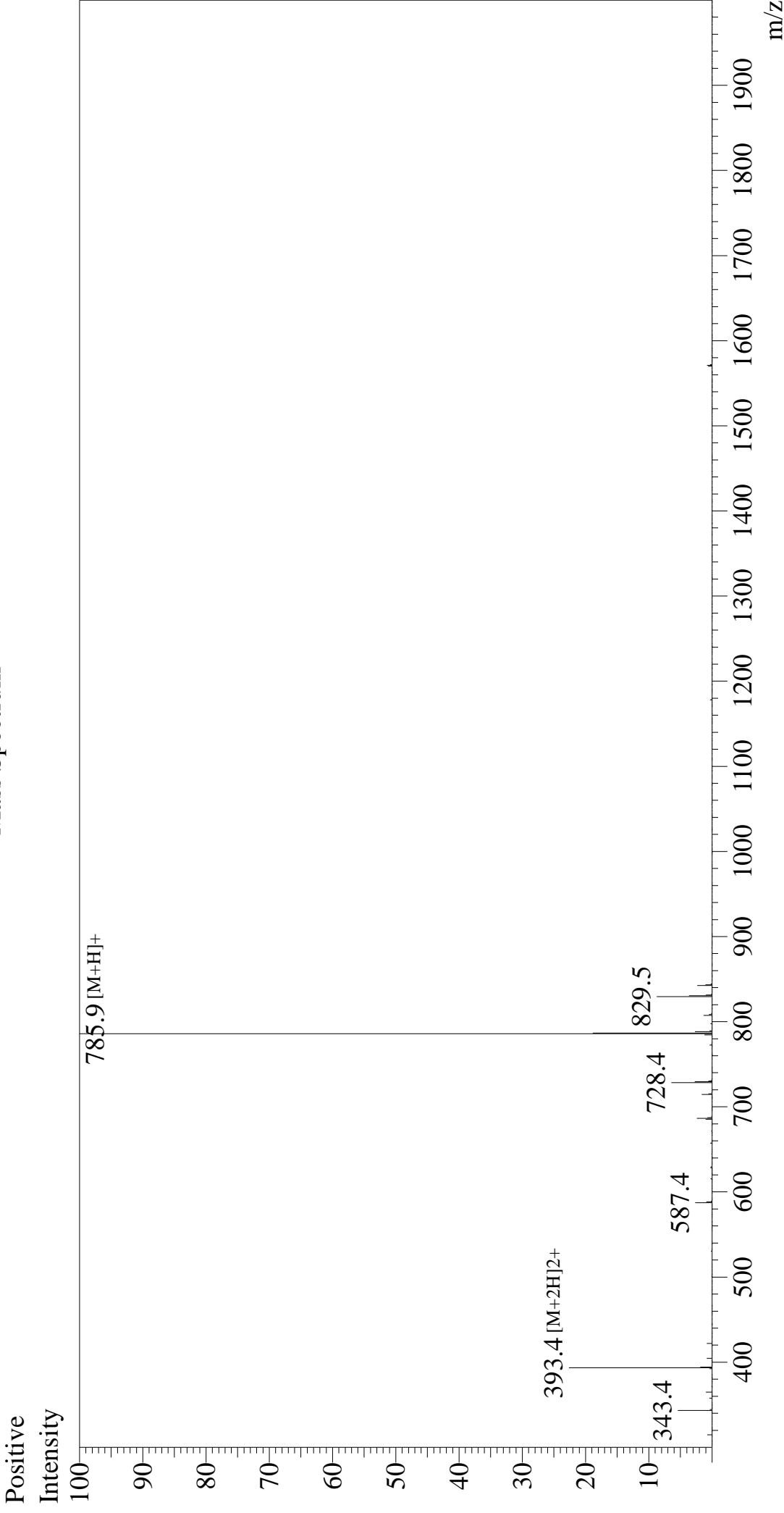


Mass Spectrum



Sample Information
Month-Day Processed : 12/15/23
Time Processed : 9:46:29 AM
Injection Volume : 0.3
Sample Name : KRAS G12V Peptide (VVGAVGVGK)
Cat No. : RP30228
Lot No. : E0217523L
Theoretical MW:784.95
Observed MW :784.9

Interface :ESI
Nebulizing Gas Flow :1.5L/min
CDL Temp :250
Block Temp :200
Equipment : ZI21010035
Interface Bias :+4.5 kV
Drying Gas Flow :5 L/min
T.Flow :0.2 ml/min
B.conc :50%H2O/50%MeOH