

CD45 Antibody, mAb, Mouse

Cat. No.	Name	Size
V04401	CD45 Antibody (M8A9), mAb, Mouse	*
V04402	CD45 Antibody (FL71), mAb, Mouse	*

Note: * Available in multiple package sizes: 100 µg, 1 mg (or more). GenScript can customize each product per customer's request including product size, buffer components, etc. GenScript can also provide conjugated antibody per customer's request with Biotin, FITC, PE and APC.

Specificity	Human CD45
Alternative Name	Ptprc, T200, LCA, LY5 and L-CA
Isotype	Mouse IgG1, κ for M8A9 Mouse IgG2a for FL71
Clone	M8A9 and FL71
Application	Flow cytometry
Recommended Usage	It is recommended that the reagent be titrated for optimal performance for each application. Each lot of the antibodies undergoes quality control test by flow cytometric analysis.
Preparation	Protein A/G affinity column
Concentration	Lot-specific. Please check your CoA to find the concentration.
Formulation	1) PBS, pH 7.4, containing 0.03% Proclin 300 2) 50 mM Na-citrate, 150 mM NaCl, pH 7.0, containing 0.03% Proclin 300 * *: For new batch since 09/01/2018, please refer to COA.
Storage	The antibody should be stored for up to three months at 2-8°C or for up to three years at -20°C or below. Avoid repeated freezing and thawing cycles.

Background CD45 is a single chain type I membrane glycoprotein. It is a tyrosine phosphatase, expressed on the surface of all leukocytes including lymphocytes, monocytes, granulocytes, eosinophils, and thymocytes. The CD45 molecule plays an important role in T and B cell antigen receptor mediated activation.

Fluorescent Dyes	Excitation Source	Excitation Max	Emission Max
FITC	Blue 488 nm	494 nm	520 nm
PE	Blue 488 nm, Green 532 nm, Yellow/Green 561 nm	496 nm	578 nm
APC	Red 633 nm	650 nm	660 nm

Data Demonstration

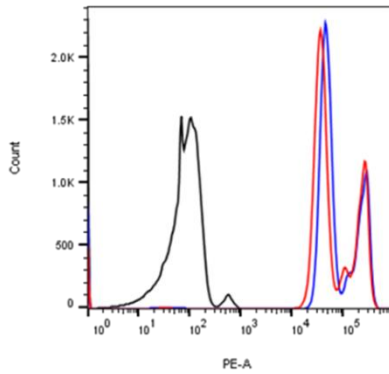


Figure 1. Human whole blood after red blood cell lysis were stained with CD45 Antibody (M8A9), mAb, Mouse (GenScript, V04401; red curve) or with a negative control (black curve), or with a positive antibody (blue curve) followed by R-PE conjugated anti-mouse IgG in flow cytometric analysis.

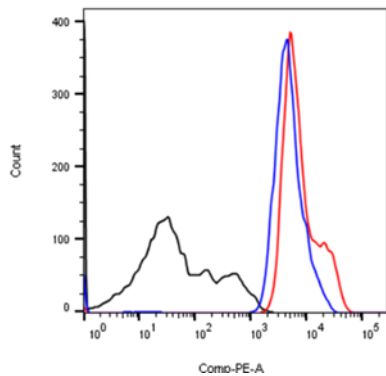


Figure 2. Human whole blood after red blood cell lysis were stained with CD45 Antibody (FL71), mAb, Mouse (GenScript, V04402; red curve) or with a negative control (black curve), or with a positive antibody (blue curve) followed by R-PE conjugated anti-mouse IgG in flow cytometric analysis.

For research use only