

CD3 Antibody, mAb, Mouse

Cat. No.	Name	Size
V02601	CD3 Antibody (M2A27), mAb, Mouse	*
V02602	CD3 Antibody (T3), mAb, Mouse	*

Note: * Available in multiple package sizes: 100 µg, 1 mg (or more). GenScript can customize each product per customer's request including product size, buffer components, etc. GenScript can also provide conjugated antibody per customer's request with Biotin, FITC, PE and APC.

Specificity	Human CD3
Alternative Name	T cell antigen receptor complex and T3
Isotype	IgG1 for mAb M2A27, IgG2b for mAb T3
Clone	M2A27 and T3
Application	Flow cytometry
Recommended Usage	It is recommended that the reagent be titrated for optimal performance for each application. Each lot of the antibodies undergoes quality control test by flow cytometric analysis.
Preparation	Protein A/G affinity column
Concentration	Lot-specific. Please check your CoA to find the concentration.
Formulation	1) PBS, pH 7.4, containing 0.03% Proclin 300 2) 50 mM Na-citrate, 150 mM NaCl, pH7.0, containing 0.03% Proclin 300 * *: For new batch since 09/01/2018, please refer to COA.
Storage	The antibody should be stored for up to three months at 2-8°C or for up to three years at -20°C or below. Avoid repeated freezing and thawing cycles.
Background	CD3 is a member of the immunoglobulin superfamily, expressed on T cells. It is composed of four distinct chains (ε, γ, δ, ζ). CD3 antigen can form a

complex with the T cell receptor (TCR). It plays an important role in TCR signal transduction and T cell activation.

**Fluorescent
Dyes**

	Excitation Source	Excitation Max	Emission Max
FITC	Blue 488 nm	494 nm	520 nm
PE	Blue 488 nm, Green 532 nm, Yellow/Green 561 nm	496 nm	578 nm
APC	Red 633 nm	650 nm	660 nm

**Data
Demonstration**

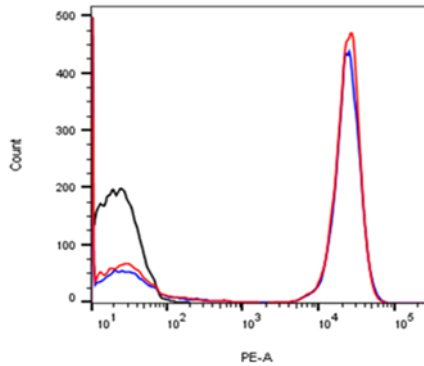


Figure 1. Flow cytometric analysis of human whole blood after red blood cell lysis with CD3 Antibody (M2A27), mAb, Mouse (GenScript, V02601; red curve) or with an isotype control antibody (black curve), or with a positive antibody (blue curve) followed by R-PE conjugated anti-mouse IgG.

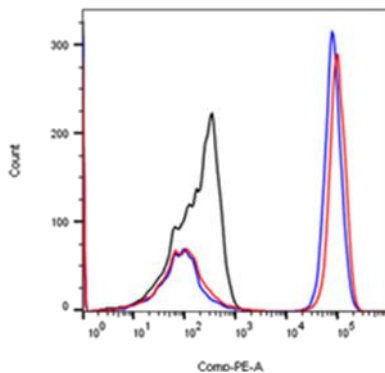


Figure 2. Flow cytometric analysis of human whole blood after red blood cell lysis with CD3 Antibody (T3), mAb, Mouse (GenScript, V02602; red curve) or with an isotype control antibody (black curve), or with a positive antibody (blue curve) followed by R-PE conjugated anti-mouse IgG.

For research use only