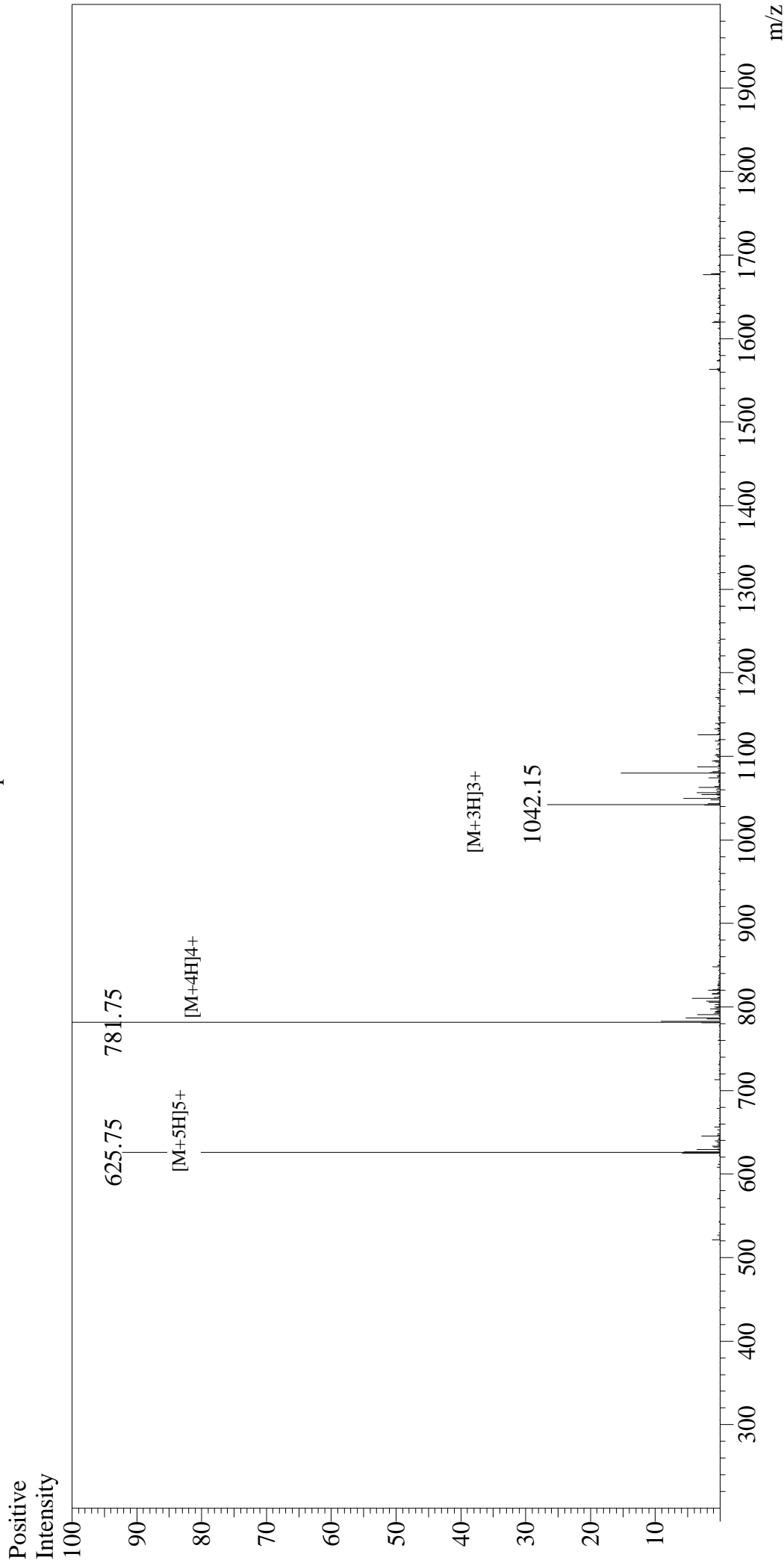


Mass Spectrum



Sample Information

User : Gary
Month-Day Processed : 10/10/16
Time Processed : 7:45:51
Injection Volume : 0.2
Sample Name : Lactoferrin (17-41)
Cat No. : RP20489
Lot No. : PE0281609
Theoretical MW : 3123.90
Observed MW : 3123.00

Interface : ESI
Nebulizing Gas Flow : 1.5L/min
CDL Temp : 250°C
Block Temp : 200°C

Interface Bias : +4.5kV
Drying Gas Flow : 5 L/min
T.Flow : 0.2ml/min
B.conc : 50%H2O/50%MeOH