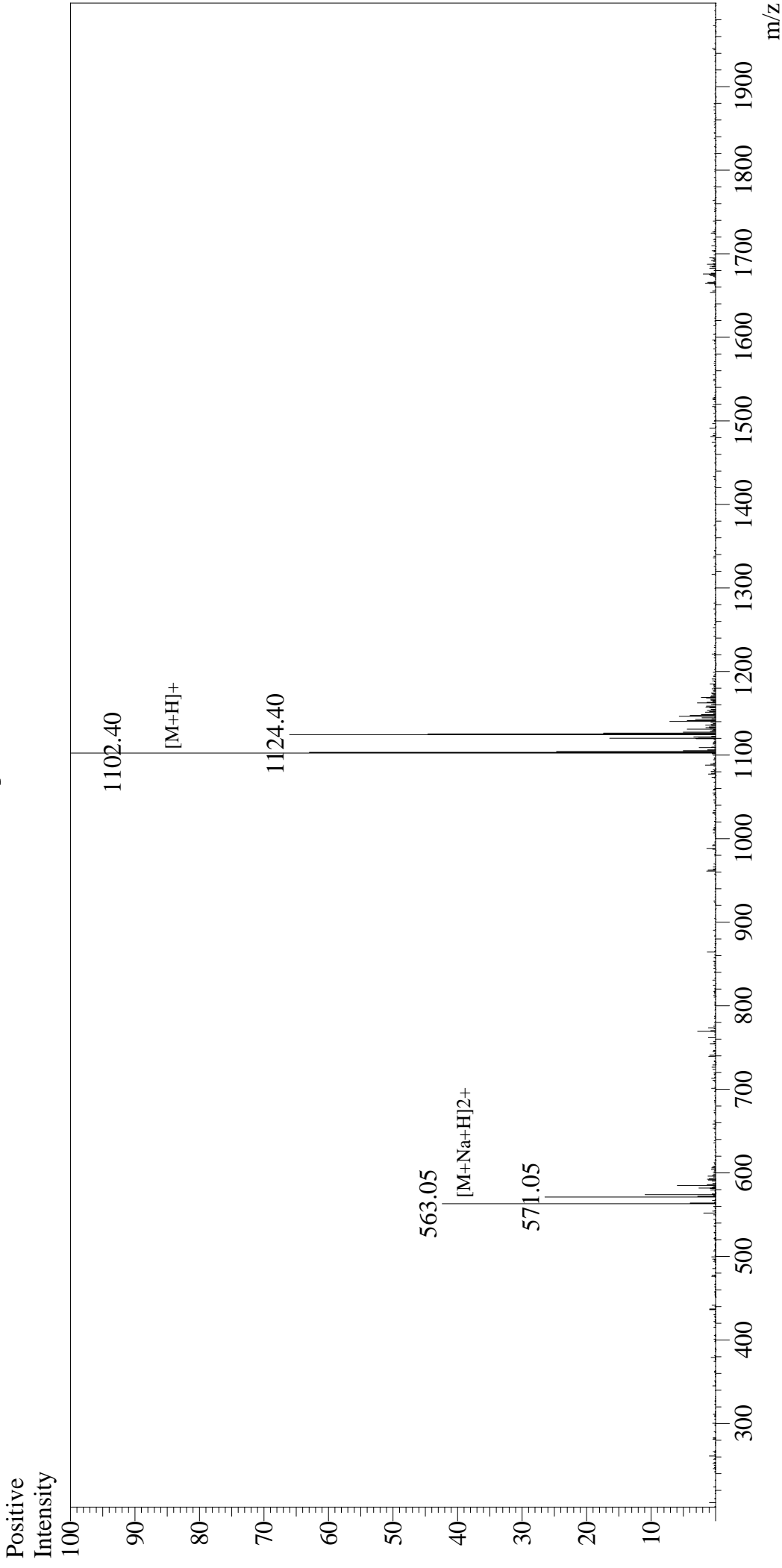


# Mass Spectrum



Sample Information  
User : Gary  
Month-Day Processed : 09/20/16  
Time Processed : 14:56:56  
Injection Volume : 0.2  
Sample Name : HA Peptide  
Cat No. : RP11735  
Lot No. : PE9641609  
Theoretical MW : 1102.15  
Observed MW : 1101.40

Interface : ESI  
Nebulizing Gas Flow : 1.5L/min  
CDL Temp : 250 °C  
Block Temp : 200 °C

Interface Bias : +4.5kV  
Drying Gas Flow : 5 L/min  
T.Flow : 0.2ml/min  
B.conc : 50%H2O/50%MeOH