

Sample Name :InsB 9-23  
 Cat. No. :RP20391  
 Lot. No. :PE1361601

Pump A : 0.065% trifluoroacetic in 100% water (v/v)  
 Pump B : 0.05% trifluoroacetic in 100% acetonitrile (v/v)  
 Total Flow:1 ml/min  
 Wavelength:220 nm

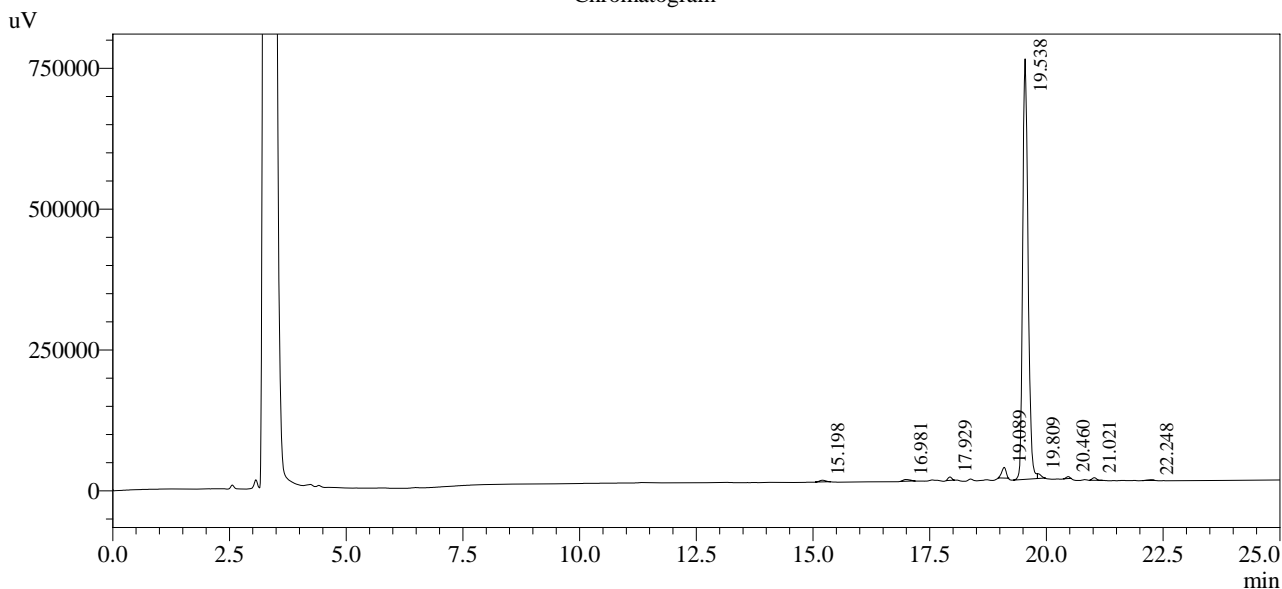
| Time  | Unit       | Command       | Value | Comment |
|-------|------------|---------------|-------|---------|
| 0.01  | Pumps      | Pump A B.Conc | 5     |         |
| 25.00 | Pumps      | Pump A B.Conc | 65    |         |
| 25.01 | Pumps      | Pump A B.Conc | 95    |         |
| 31.00 | Pumps      | Pump A B.Conc | 95    |         |
| 31.01 | Pumps      | Pump A B.Conc | 5     |         |
| 40.00 | Pumps      | Pump A B.Conc | 5     |         |
| 40.01 | Controller | Stop          |       |         |

<<Column Performance>>

<Detector A>

Column : Alltima™ C18 4.6 x 250 mm

Chromatogram



I Det.A Ch1 / 220nm

Peak Table

Detector A Ch1 220nm

| Peak# | Ret. Time | Area    | Height | Area %  |
|-------|-----------|---------|--------|---------|
| 1     | 15.198    | 28399   | 2981   | 0.451   |
| 2     | 16.981    | 31861   | 3019   | 0.506   |
| 3     | 17.929    | 32222   | 5921   | 0.512   |
| 4     | 19.089    | 122640  | 19060  | 1.949   |
| 5     | 19.538    | 5982892 | 746678 | 95.068  |
| 6     | 19.809    | 42460   | 8765   | 0.675   |
| 7     | 20.460    | 18399   | 3557   | 0.292   |
| 8     | 21.021    | 28908   | 4609   | 0.459   |
| 9     | 22.248    | 5473    | 385    | 0.087   |
| Total |           | 6293254 | 794975 | 100.000 |