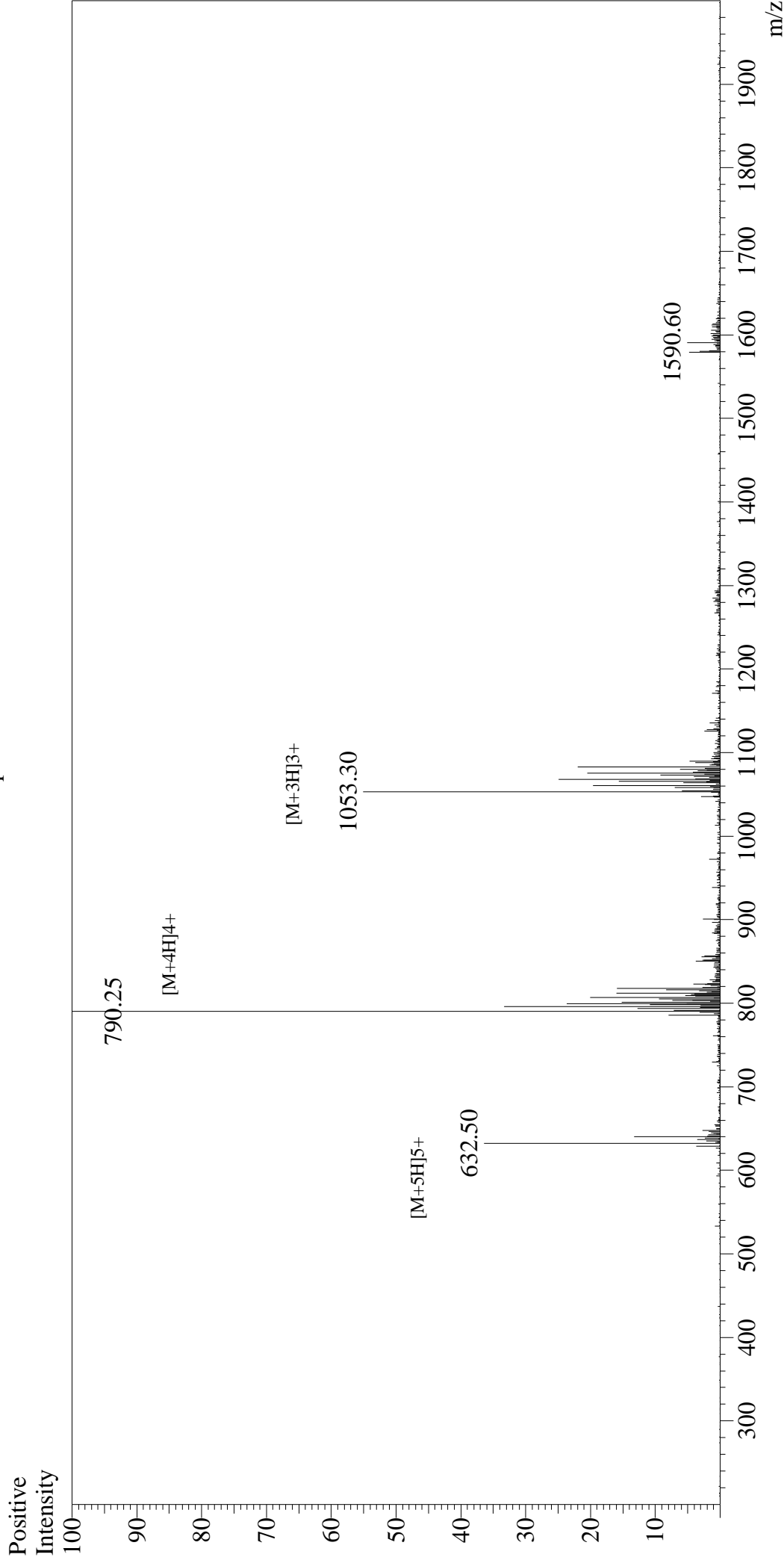


Mass Spectrum



Sample Information

User : Gary
 Month-Day Processed : 03/07/16
 Time Processed : 17:15:10
 Injection Volume : 0.2
 Sample Name : Galanin, human
 Cat No. : RP10801
 Lot No. : PE9001603
 Theoretical MW : 3157.41
 Observed MW : 3157.00

Interface : ESI
 Nebulizing Gas Flow : 1.5L/min
 CDL Temp : 250°C
 Block Temp : 200°C
 Interface Bias : +4.5kV
 Drying Gas Flow : 5 L/min
 T.Flow : 0.2ml/min
 B.conc : 50% H₂O/50% MeOH