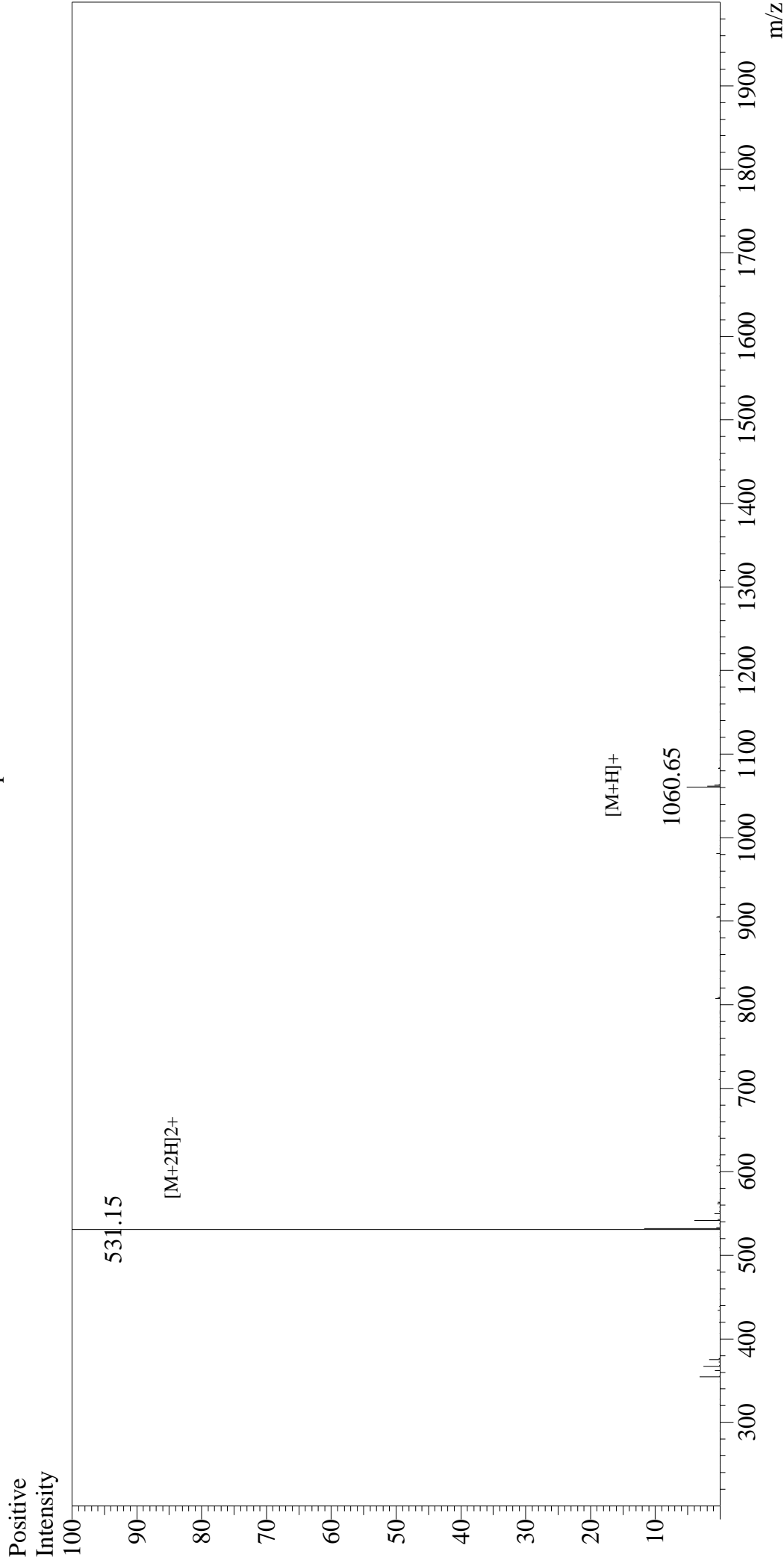


# Mass Spectrum



## Sample Information

User : Gary  
Month-Day Processed : 05/16/16  
Time Processed : 11:42:21  
Injection Volume : 0.2  
Sample Name : Bradykinin  
Cat No. : RP11129  
Lot No. : PE6421605  
Theoretical MW : 1060.21  
Observed MW : 1060.30

Interface : ESI  
Nebulizing Gas Flow : 1.5L/min  
CDL Temp : 250°C  
Block Temp : 200°C

Interface Bias : +4.5kV  
Drying Gas Flow : 5 L/min  
T.Flow : 0.2ml/min  
B.conc : 50%H<sub>2</sub>O/50%MeOH