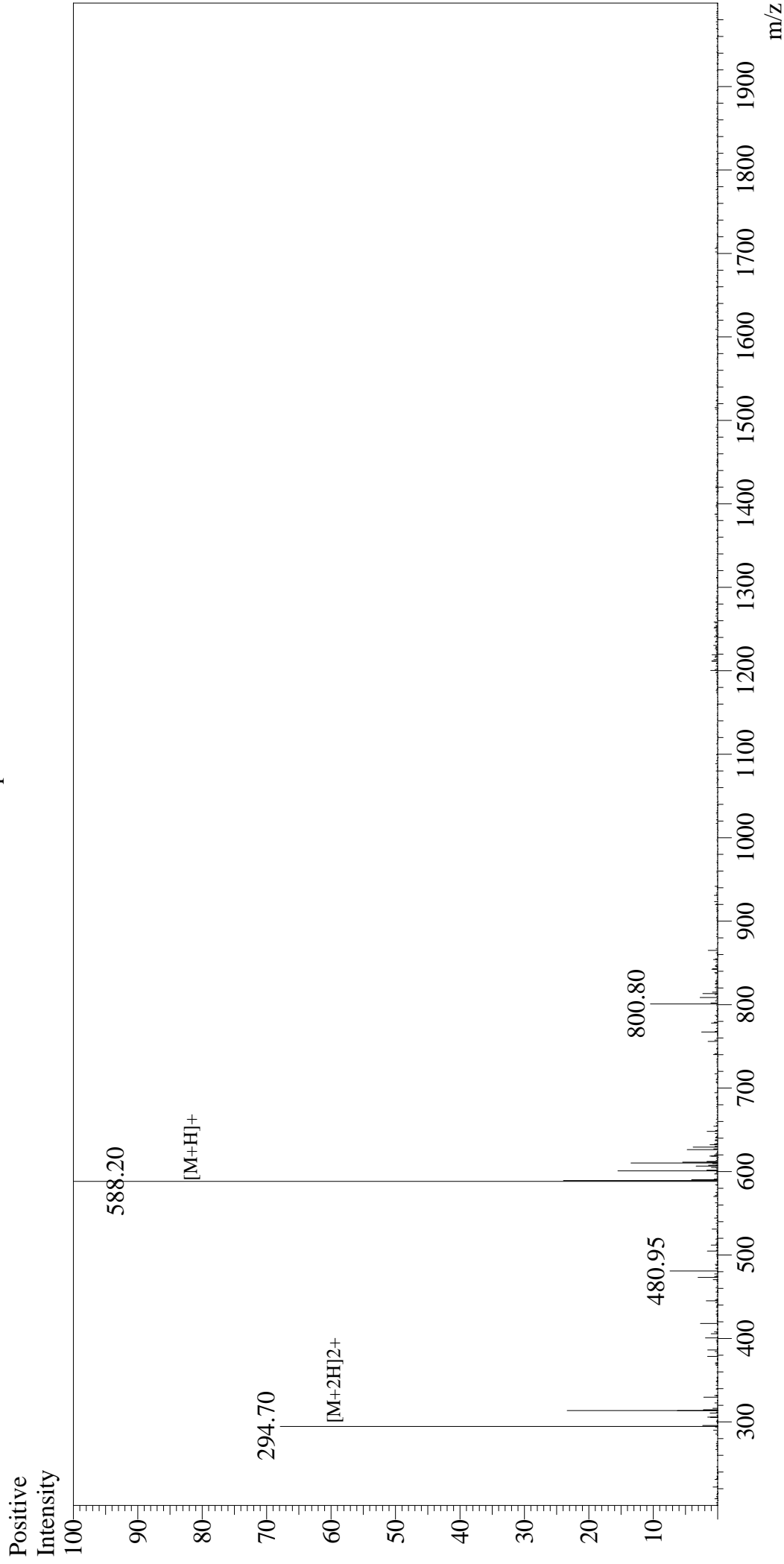


# Mass Spectrum



## Sample Information

User : Gary  
Month-Day Processed : 04/07/16  
Time Processed : 11:09:38  
Injection Volume : 0.2  
Sample Name : GRGDSP  
Cat No. : RP20255  
Lot No. : PE7991604  
Theoretical MW : 587.59  
Observed MW : 587.20

## Interface

Interface : ESI  
Nebulizing Gas Flow : 1.5L/min  
CDL Temp : 250°C  
Block Temp : 200°C

## Interface Bias

Interface Bias : +4.5kV  
Drying Gas Flow : 5 L/min  
T.Flow : 0.2ml/min  
B.conc : 50%H2O/50%MeOH