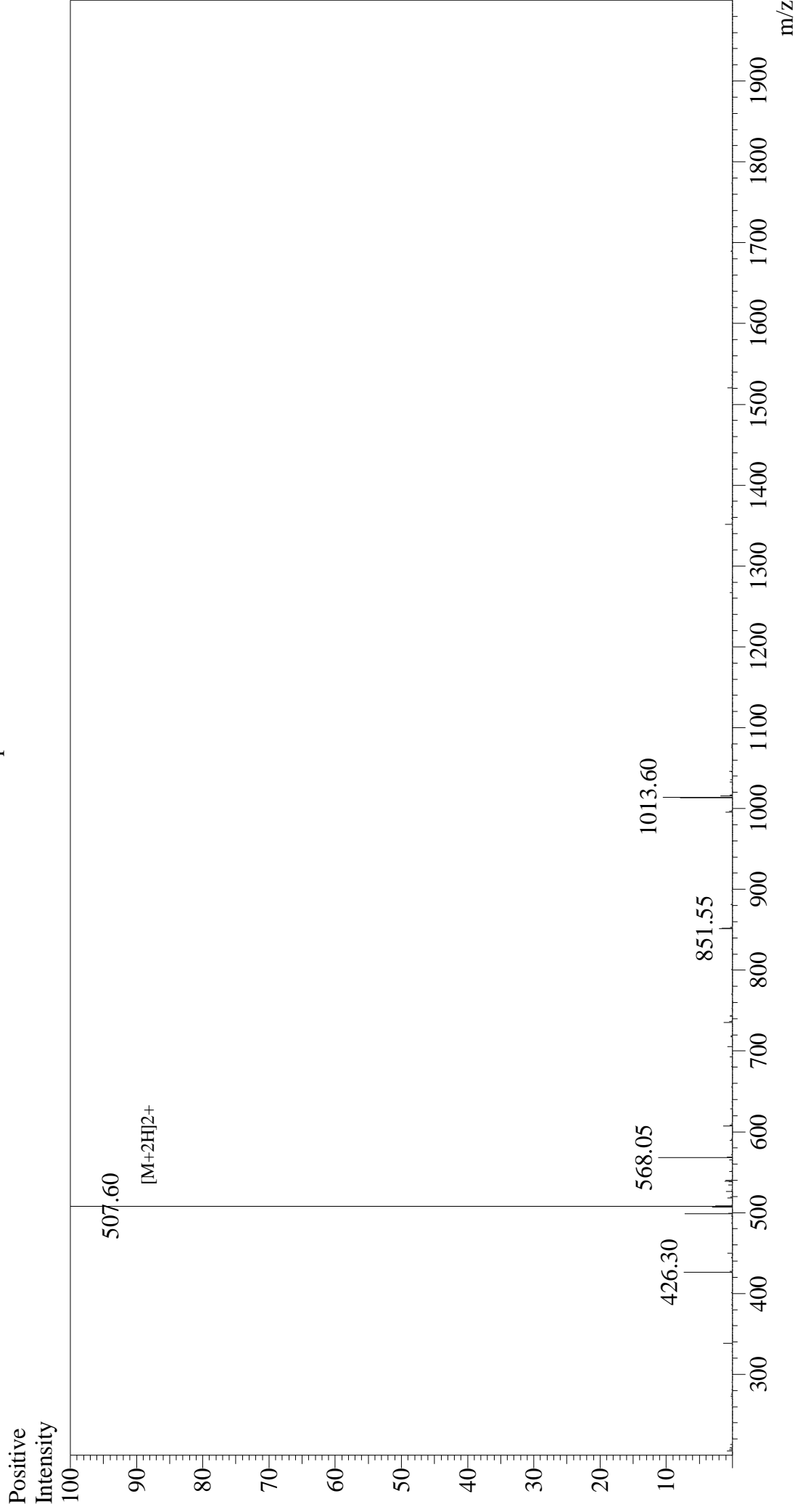


Mass Spectrum



Sample Information

Acquired by : Gary  
Month-Day Processed : 05/22/16  
Time Processed : 15:51:33  
Injection Volume : 0.2  
Sample Name : DYKDDDDK Peptide  
Cat No.: RP10586  
Lot No.: PE0861606  
Theoretical MW : 1012.97  
Observed MW : 1013.20

Interface : ESI  
Nebulizing Gas Flow : 1.5 L/min  
CDL Temp : 250°C  
Block Temp : 200°C

Interface Bias : +4.5 kV  
Drying Gas Flow : 5 L/min  
T.Flow : 0.2 ml/min  
B.conc : 50% H<sub>2</sub>O/50% MeOH