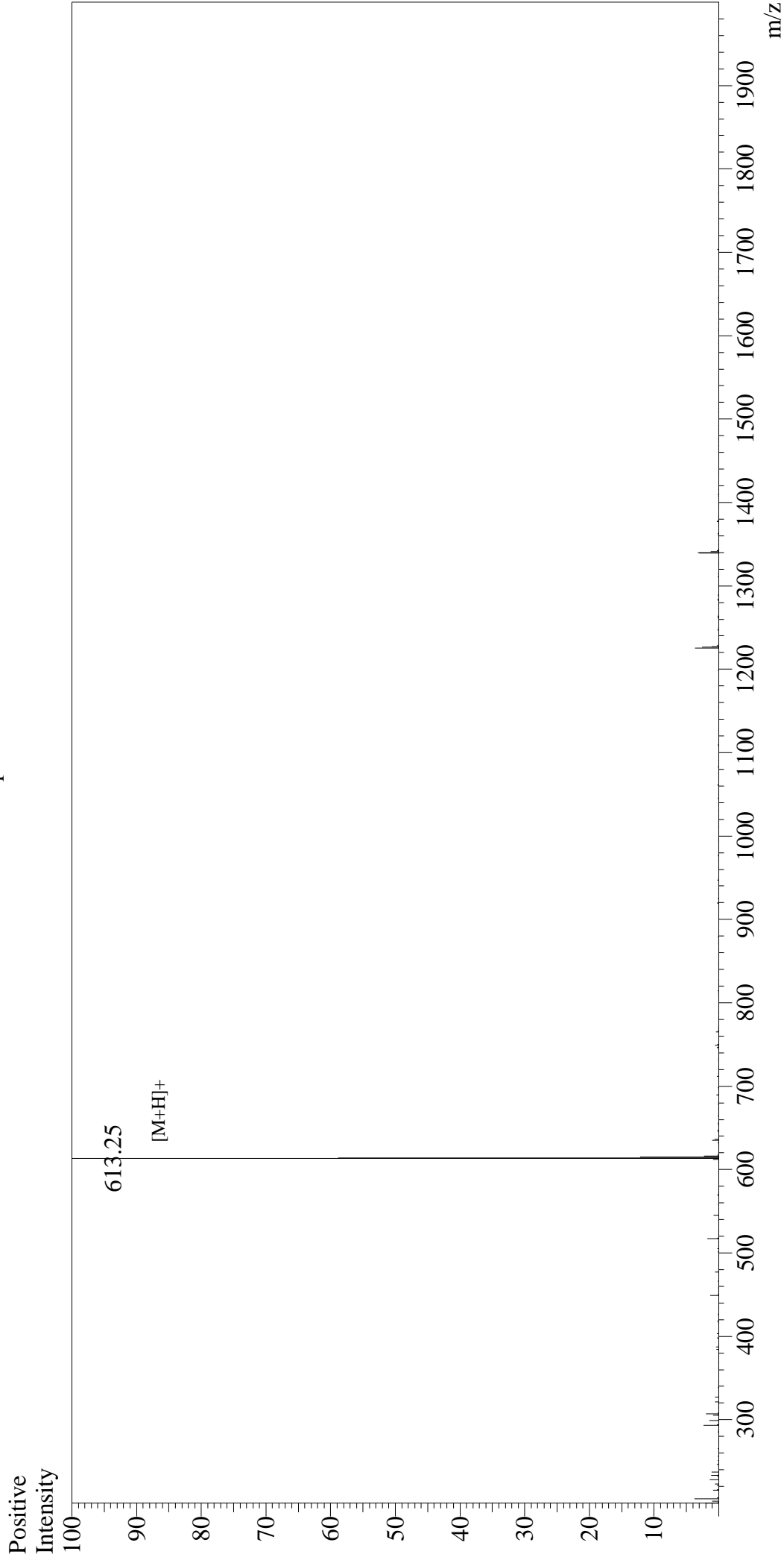


Mass Spectrum



Sample Information
User : Gary
Month-Day Processed : 08/13/16
Time Processed : 15:20:44
Injection Volume : 0.2
Sample Name : N-Cbz-Phe-Arg-AMC
Cat No. : RP11385
Lot No. : PE2041606
Theoretical MW : 612.60
Observed MW : 612.25

Interface : ESI
Nebulizing Gas Flow : 1.5L/min
CDL Temp : 250°C
Block Temp : 200°C

Interface Bias : +4.5kV
Drying Gas Flow : 5 L/min
T.Flow : 0.2ml/min
B.conc : 50%H₂O/50%MeOH