

Sample Name : Amylin, amide, rat
 Cat. No. : RP11280
 Lot. No. : PE4581602

Pump A : 0.065% trifluoroacetic in 100% water (v/v)
 Pump B : 0.05% trifluoroacetic in 100% acetonitrile (v/v)
 Total Flow: 1 ml/min
 Wavelength: 220 nm

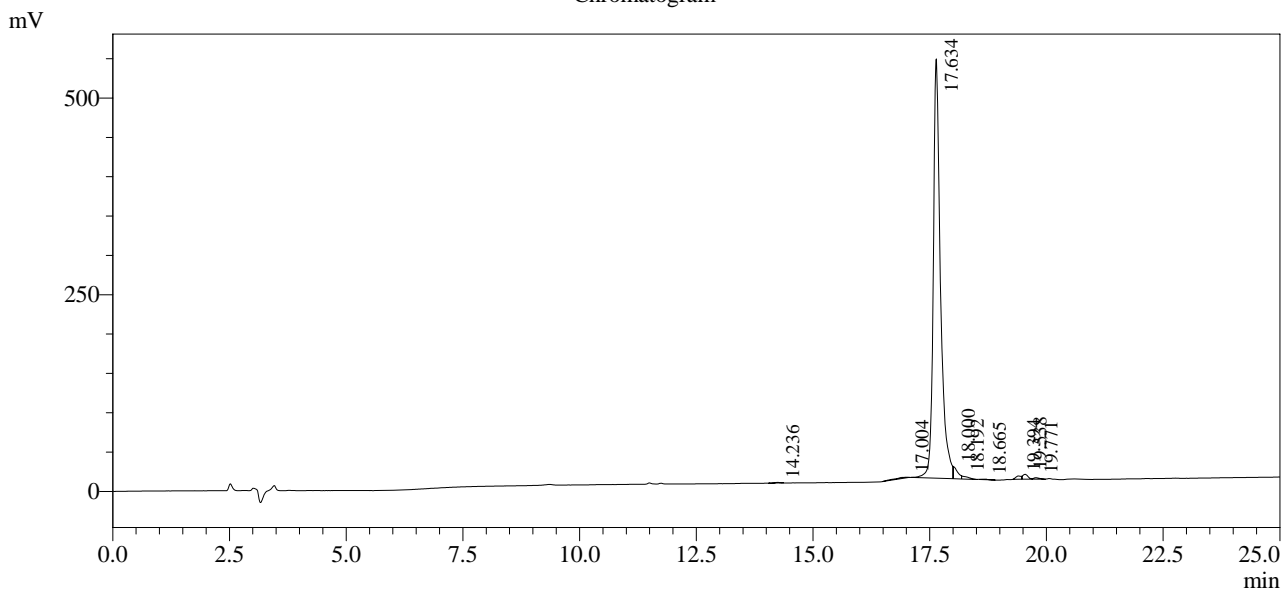
| Time | Unit | Command | Value | Comment |
|-------|------------|---------------|-------|---------|
| 0.01 | Pumps | Pump A B.Conc | 5 | |
| 25.00 | Pumps | Pump A B.Conc | 65 | |
| 25.01 | Pumps | Pump A B.Conc | 95 | |
| 31.00 | Pumps | Pump A B.Conc | 95 | |
| 31.01 | Pumps | Pump A B.Conc | 5 | |
| 40.00 | Pumps | Pump A B.Conc | 5 | |
| 40.01 | Controller | Stop | | |

<<Column Performance>>

<Detector A>

Column : Alltima™ C18 4.6 x 250 mm

Chromatogram



1 Det.A Ch1 / 220nm

Peak Table

Detector A Ch1 220nm

| Peak# | Ret. Time | Area | Height | Area % |
|-------|-----------|---------|--------|---------|
| 1 | 14.236 | 4986 | 789 | 0.083 |
| 2 | 17.004 | 28879 | 650 | 0.483 |
| 3 | 17.634 | 5709132 | 533028 | 95.444 |
| 4 | 18.000 | 101029 | 15758 | 1.689 |
| 5 | 18.192 | 34004 | 3716 | 0.568 |
| 6 | 18.665 | 6102 | 839 | 0.102 |
| 7 | 19.394 | 34351 | 4159 | 0.574 |
| 8 | 19.538 | 47761 | 6323 | 0.798 |
| 9 | 19.771 | 15443 | 1875 | 0.258 |
| Total | | 5981687 | 567138 | 100.000 |