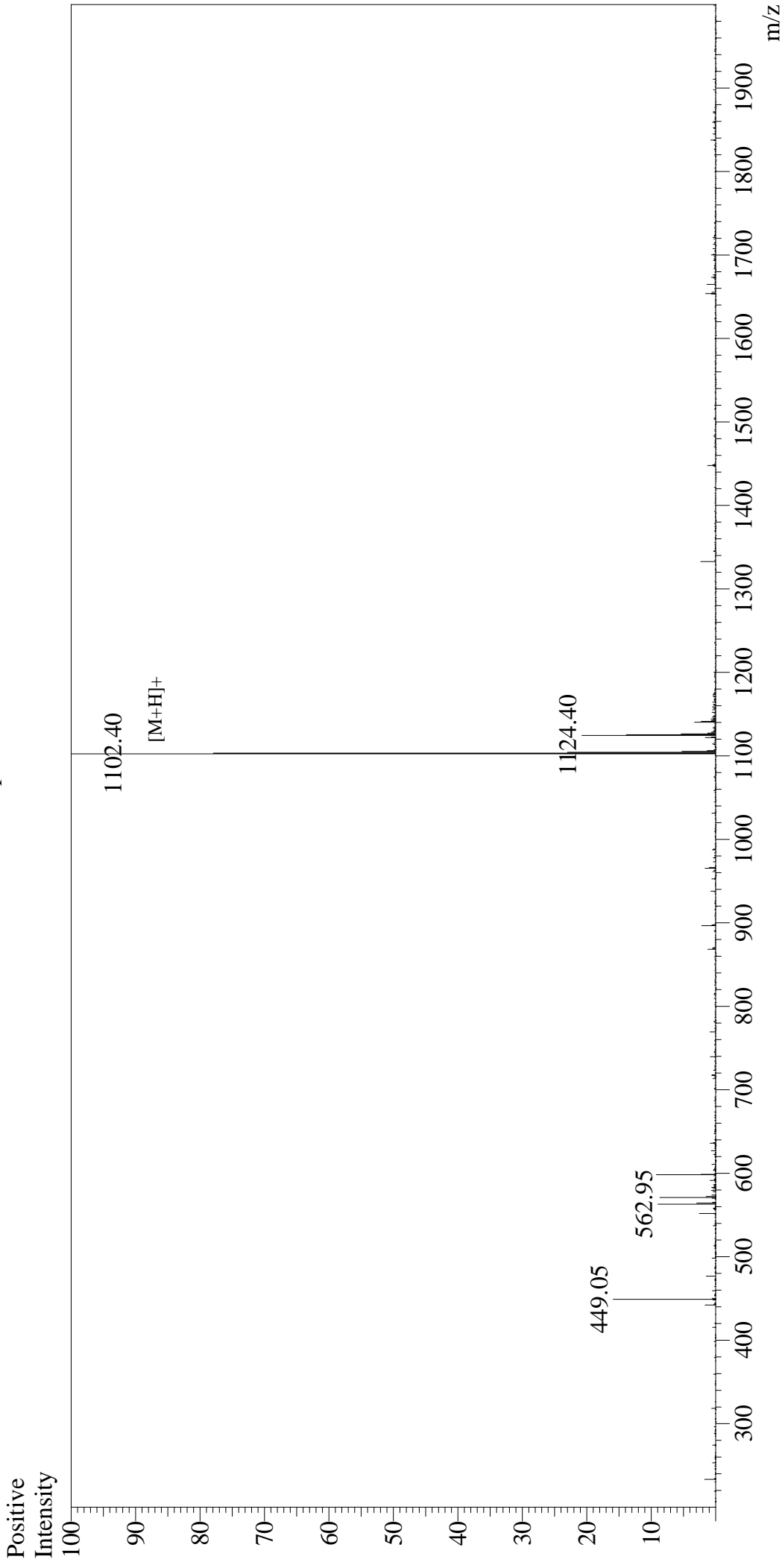


# Mass Spectrum



**Sample Information**  
User : Gary  
Month-Day Processed : 06/16/16  
Time Processed : 7:36:11  
Injection Volume : 0.2  
Sample Name : HA Peptide  
Cat No. : RP11735  
Lot No. : PE8041606  
Theoretical MW : 1102.15  
Observed MW : 1101.40

**Interface** : ESI  
Nebulizing Gas Flow : 1.5L/min  
CDL Temp : 250°C  
Block Temp : 200°C

**Interface Bias** : +4.5kV  
Drying Gas Flow : 5 L/min  
T.Flow : 0.2ml/min  
B.conc : 50%H2O/50%MeOH