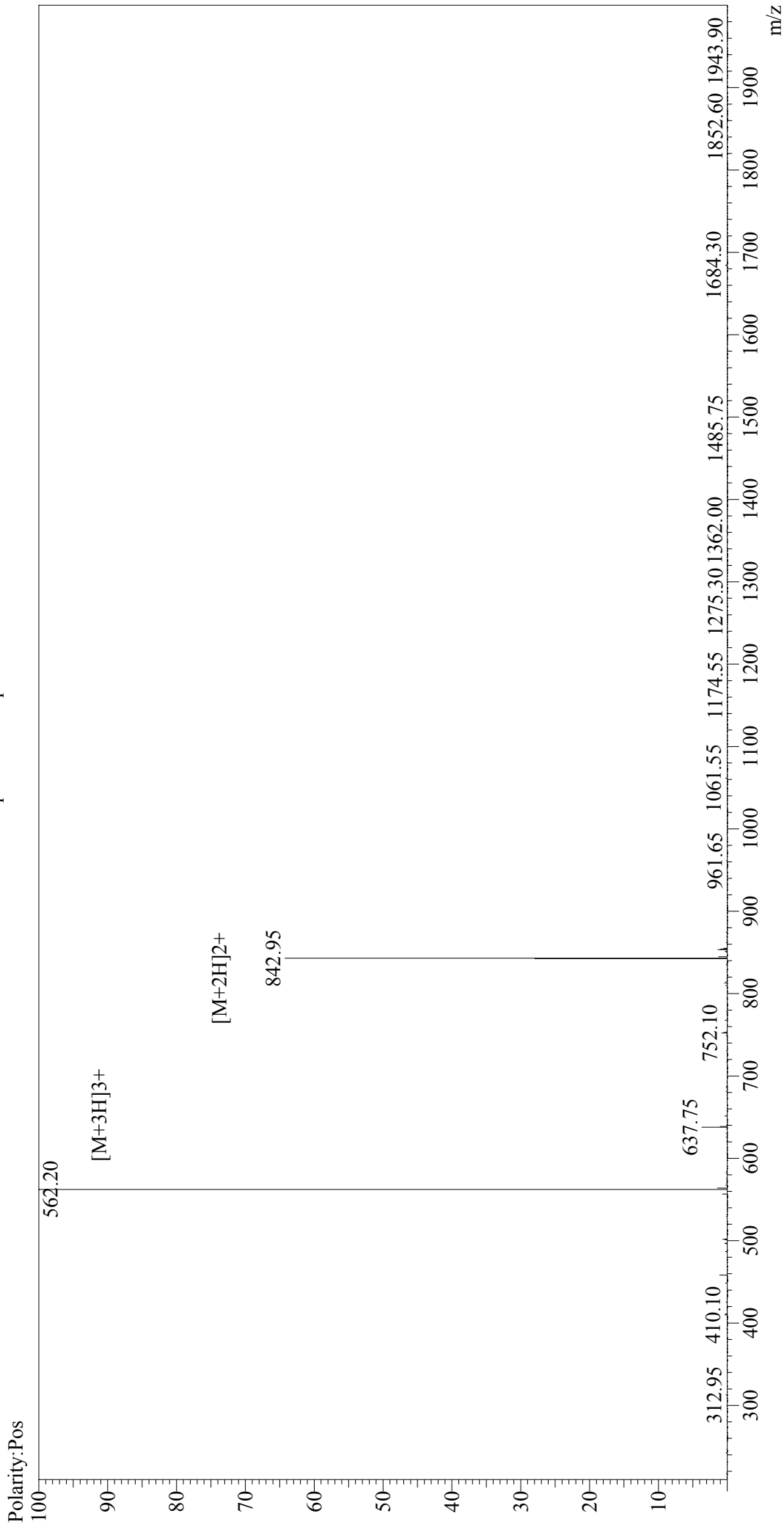


MS Spectrum Graph



Interface :ESI
 Nebulizing Gas Flow :1.5L/min
 CDL Temp :250°C
 Block Temp :200°C

Interface Bias : +4.5 kV
 Drying Gas Flow :5 L/min
 T.Flow :0.2 ml/min
 B.conc :50%H2O/50%MeOH

Sample Information

Acquired by : Admin
 Date Acquired : 2016-3-3 20:29:26
 Injection Volume : 1
 Sample Name : α-Factor Mating Pheromone, yeast
 Cat No. : RP01002
 Lot No. : PE8931603
 Theoretical MW : 1683.98
 Observed MW : 1683.60