

Sample Name : Kisspeptin-10
 Cat. No. : RP20494
 Lot. No. : PE8531603

Pump A : 0.065% trifluoroacetic in 100% water (v/v)
 Pump B : 0.05% trifluoroacetic in 100% acetonitrile (v/v)
 Total Flow:1 ml/min
 Wavelength:220 nm

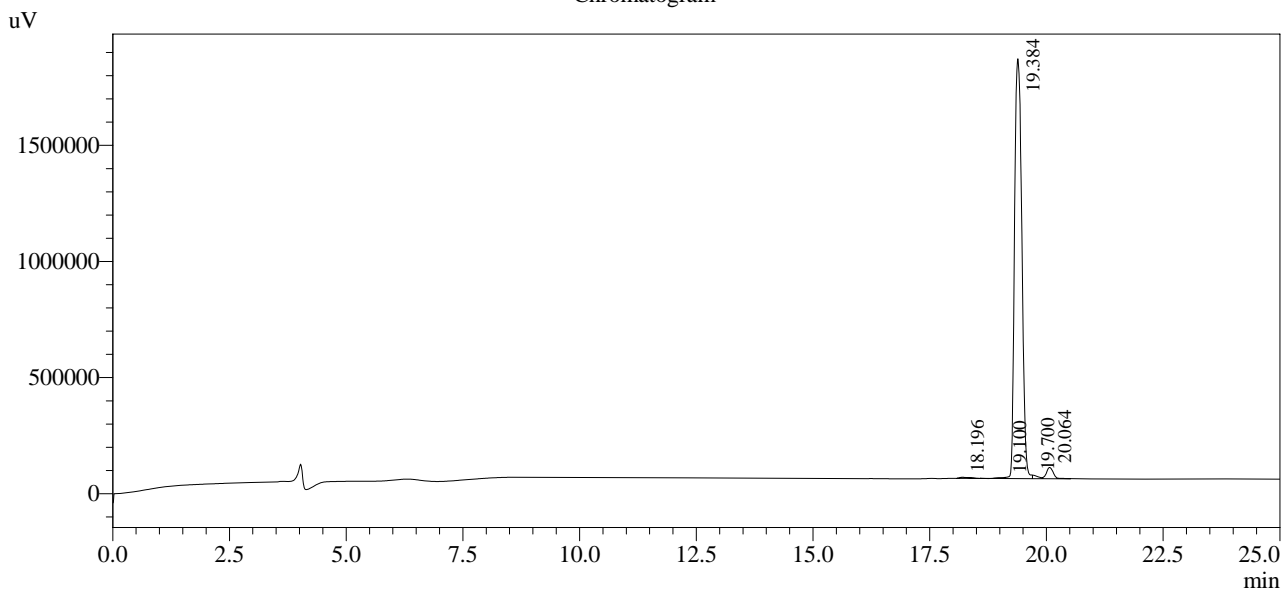
Time	Unit	Command	Value	Comment
0.01	Pumps	Pump A B.Conc	5	
25.00	Pumps	Pump A B.Conc	65	
25.01	Pumps	Pump A B.Conc	95	
31.00	Pumps	Pump A B.Conc	95	
31.01	Pumps	Pump A B.Conc	5	
40.00	Pumps	Pump A B.Conc	5	
41.01	Controller	Stop		

<<Column Performance>>

<Detector A>

Column : Alltima™ C18 4.6 x 250 mm

Chromatogram



1 Det.A Ch1 / 220nm

Peak Table

Detector A Ch1 220nm

Peak#	Ret. Time	Area	Height	Area %
1	18.196	71432	4661	0.350
2	19.100	45774	4098	0.224
3	19.384	19689955	1807243	96.399
4	19.700	119662	15413	0.586
5	20.064	498731	48518	2.442
Total		20425554	1879933	100.000