

CERTIFICATE OF ANALYSIS

Product Information

Product Name	CHO-K1/GHSR
Cat. No.	M00189
Lot No.	B80021802
Host Cell:	CHO-K1
Target Gene:	GHSR
Quantity:	2 vials of frozen cells, > 1x10 ⁶ cells/vial
Shipping Condition:	Dry Ice
Recommended Storage Condition:	Liquid Nitrogen

Stable Cell Line Information

Recommended Cell Culture Medium: F12 + 10% FBS + 500 µg/ml G418

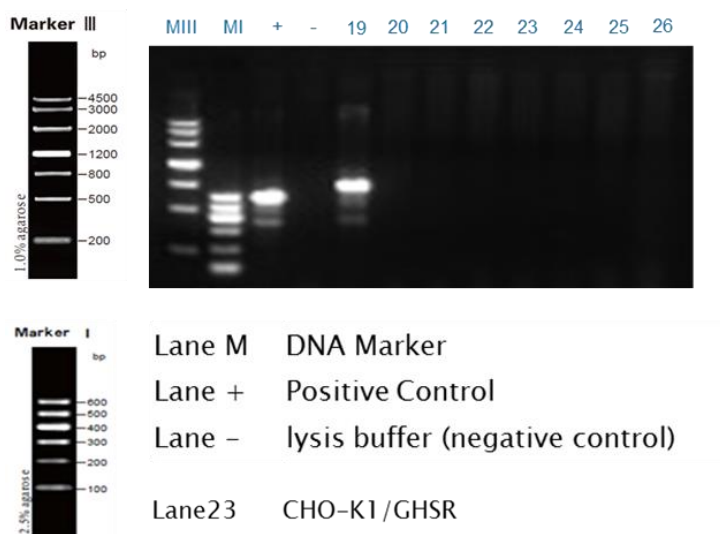
Freeze Medium: 45% Culture Medium, 45%FBS, 10% (V/V) DMSO

Application: Functional assay for GHSR

Test Item	Specification	Result
Mycoplasma 160	Negative.	Negative, Appendix 1
Functional assay	Calcium flux	EC ₅₀ = 28.5 nM

Appendix

Appendix 1: Mycoplasma 160



Appendix 2 : Calcium assay

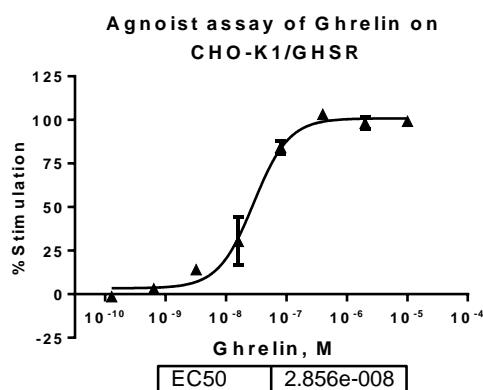


Figure 1. Ghrelin -induced concentration-dependent stimulation of intracellular calcium mobilization in CHO-K1/GHSR cells. The cells were loaded with Calcium-4 prior to stimulation with a GHSR receptor agonist, Ghrelin. The intracellular calcium change was measured by FLIPR. The effects of agonist (%Stimulation) were plotted against the log of the cumulative doses (5-fold dilution) of Ghrelin (Mean \pm SD, n = 4). The EC50 of Ghrelin on GHSR in CHO-K1 cells was 28.5 nM. The S/B of Ghrelin on GHSR in CHO-K1 cells was 8.3.

Caution

For research use only. Not intended for household use. If you have any questions about the Certificate of Analysis, please contact our customer service representative at 1-877-436-7274 (Toll-Free), or 1-732-885-9188.

Certified by:  Date: 02/11/2018
Department of Biologics Development Director